

# DAILY BRIEFING

COMPETITION DAY 6 - 11/07/2025



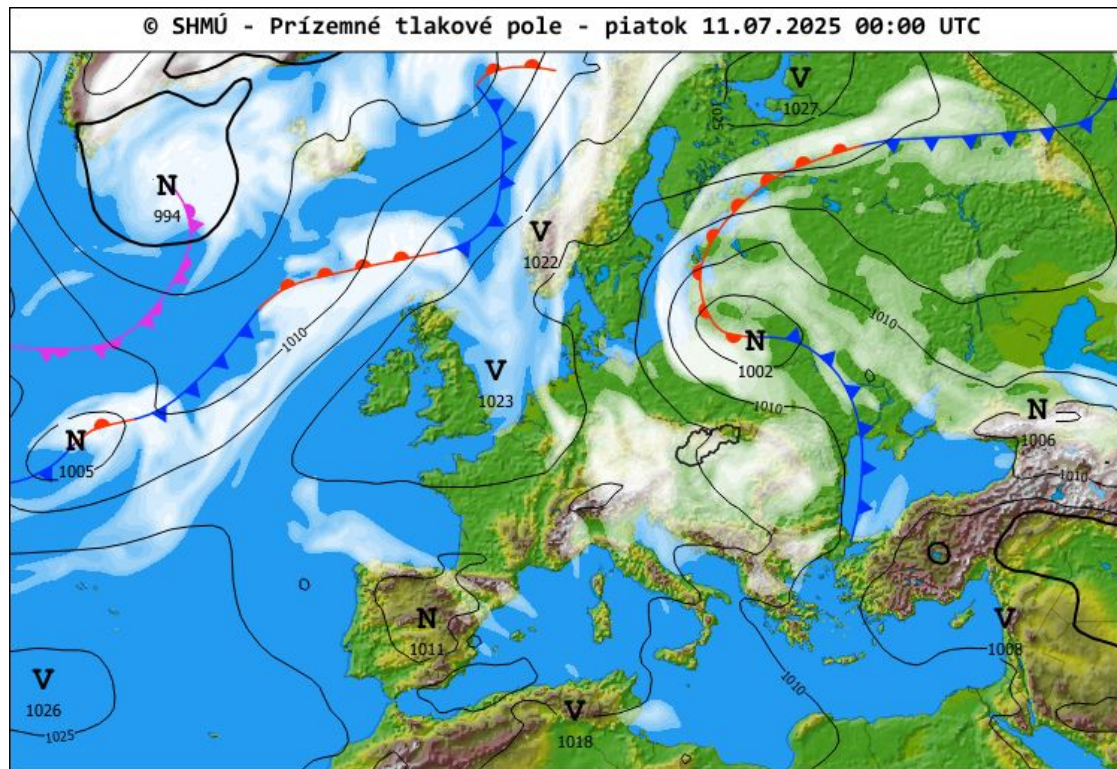


QUIZ  
NIGHT

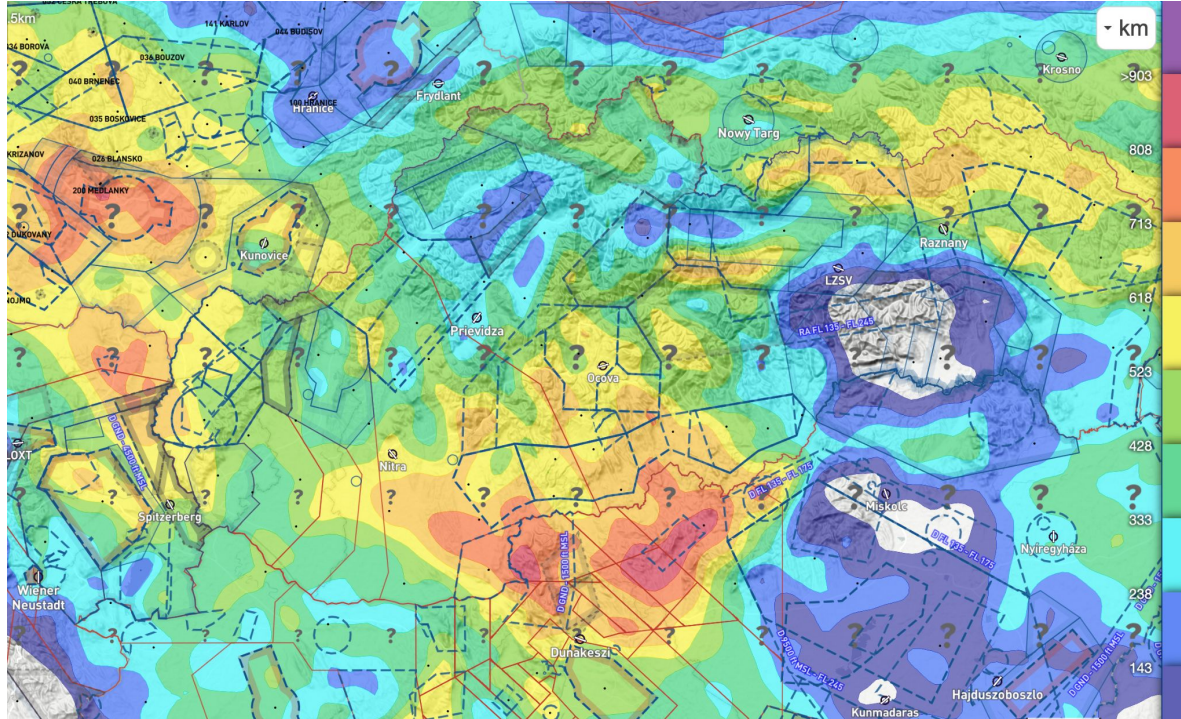
# WEATHER



# SYNOPTICS



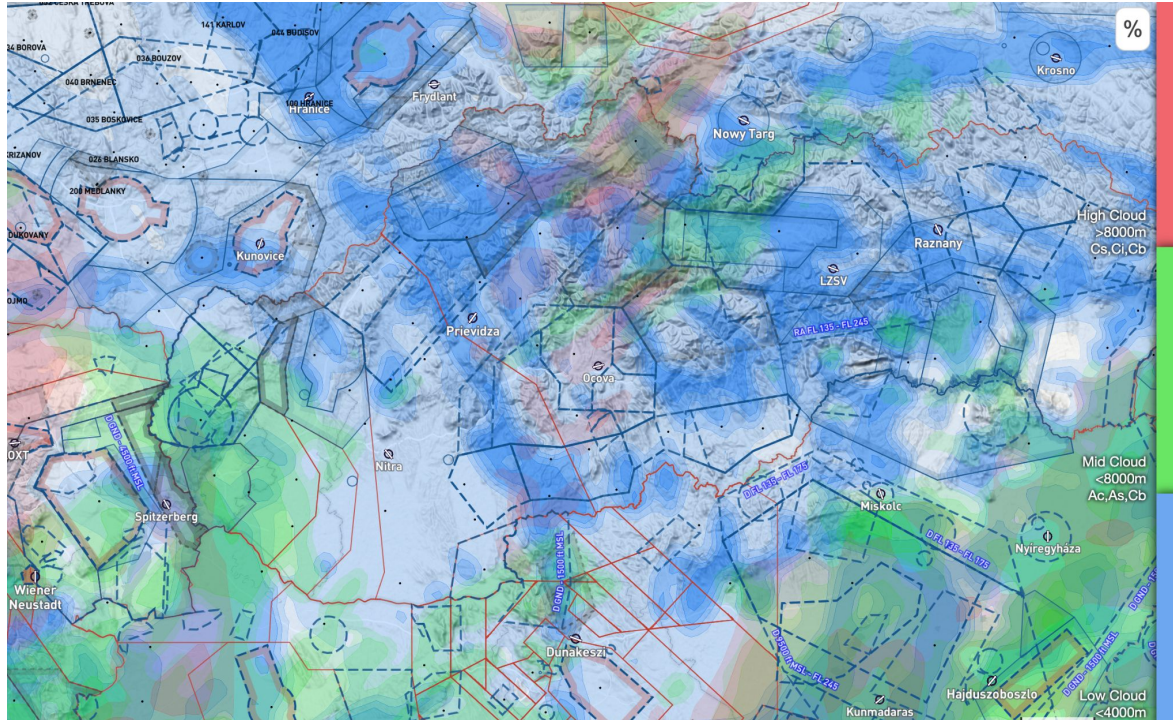
# DAY USABILITY



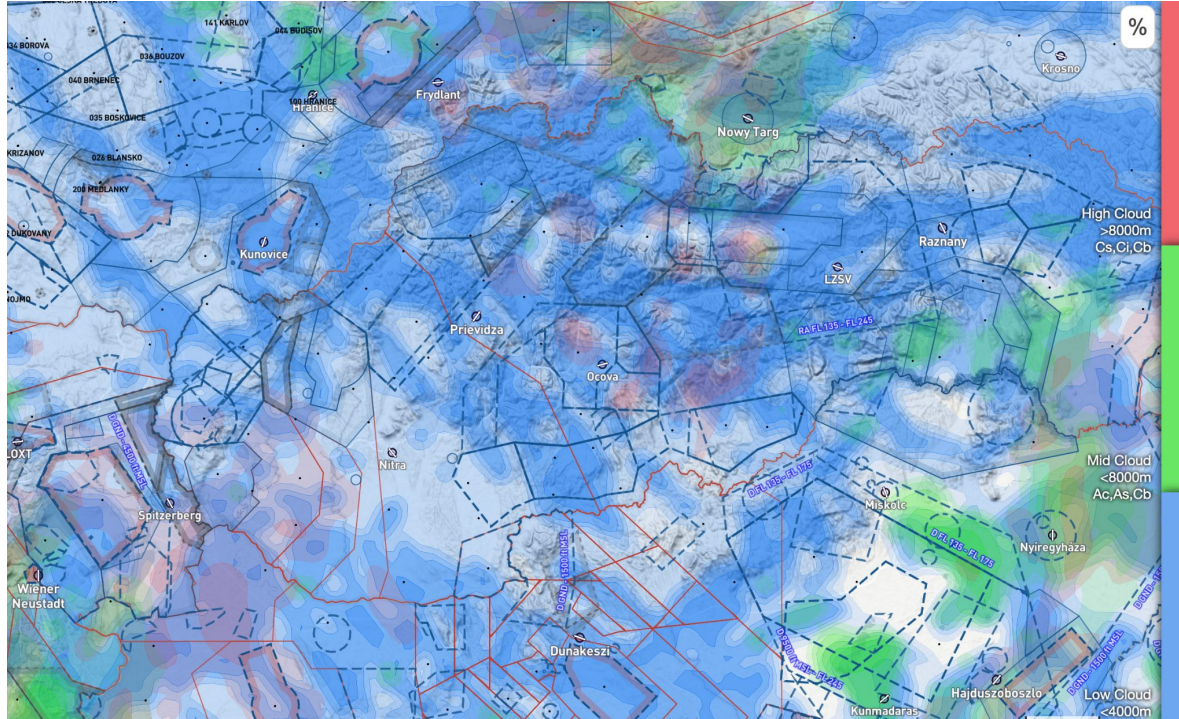
# SATELLITE (8:00-8:45)



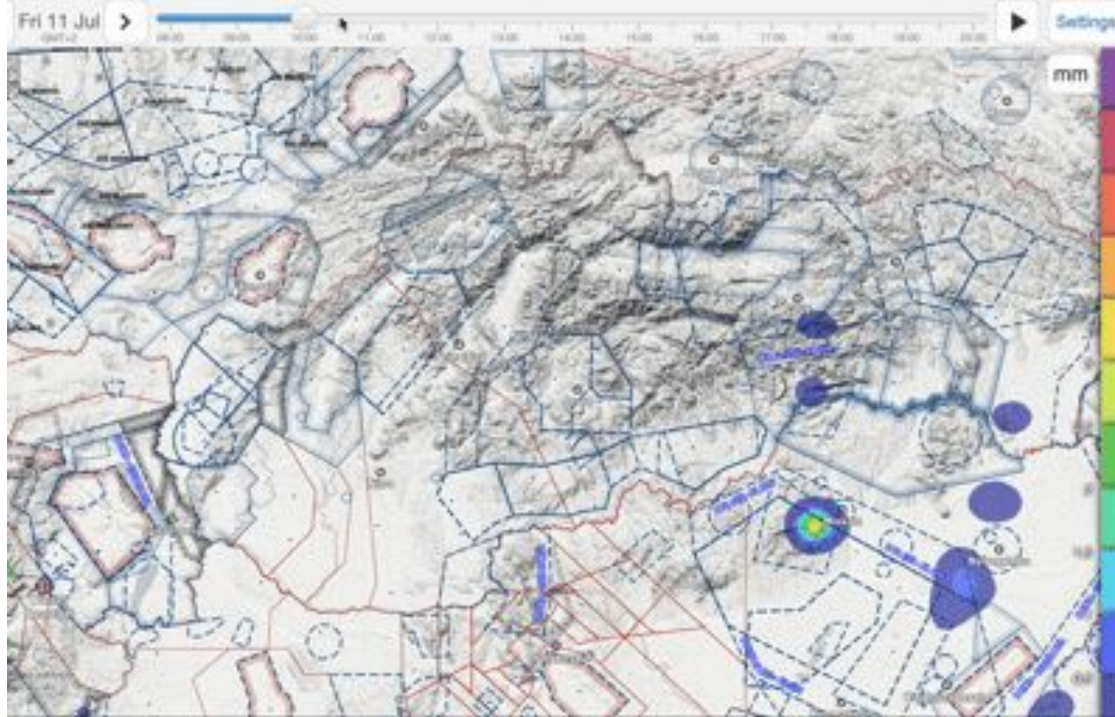
# CLOUD COVER (11:00loc)



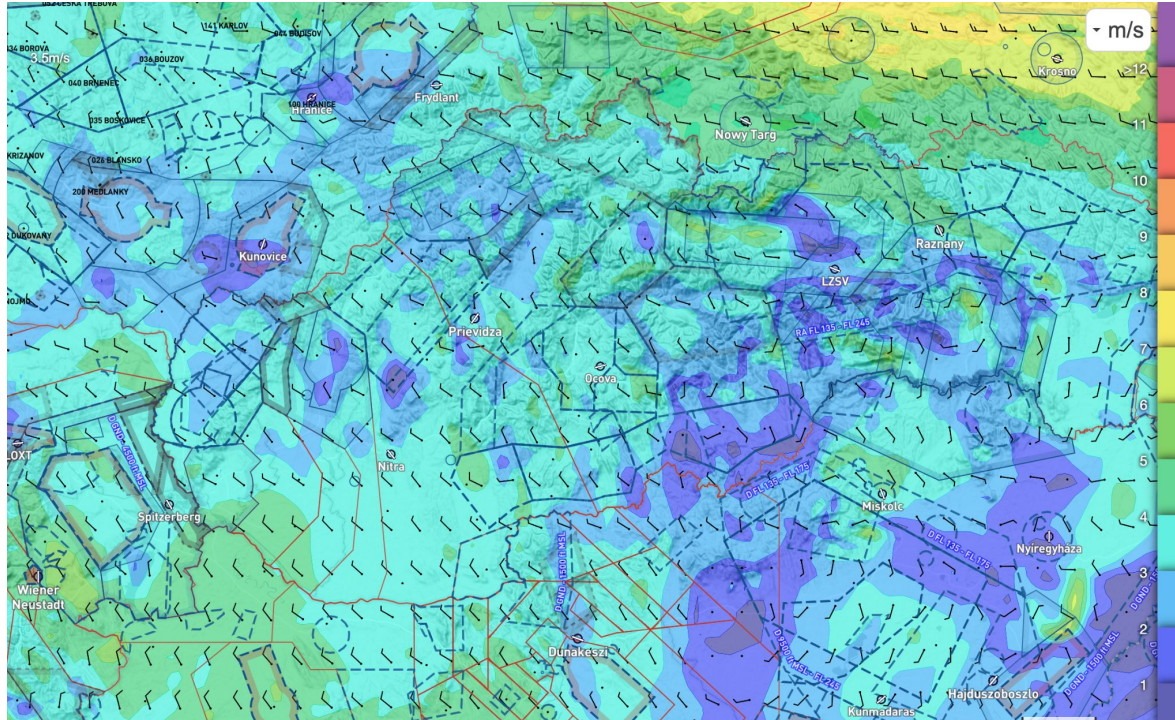
# CLOUD COVER (14:00loc)



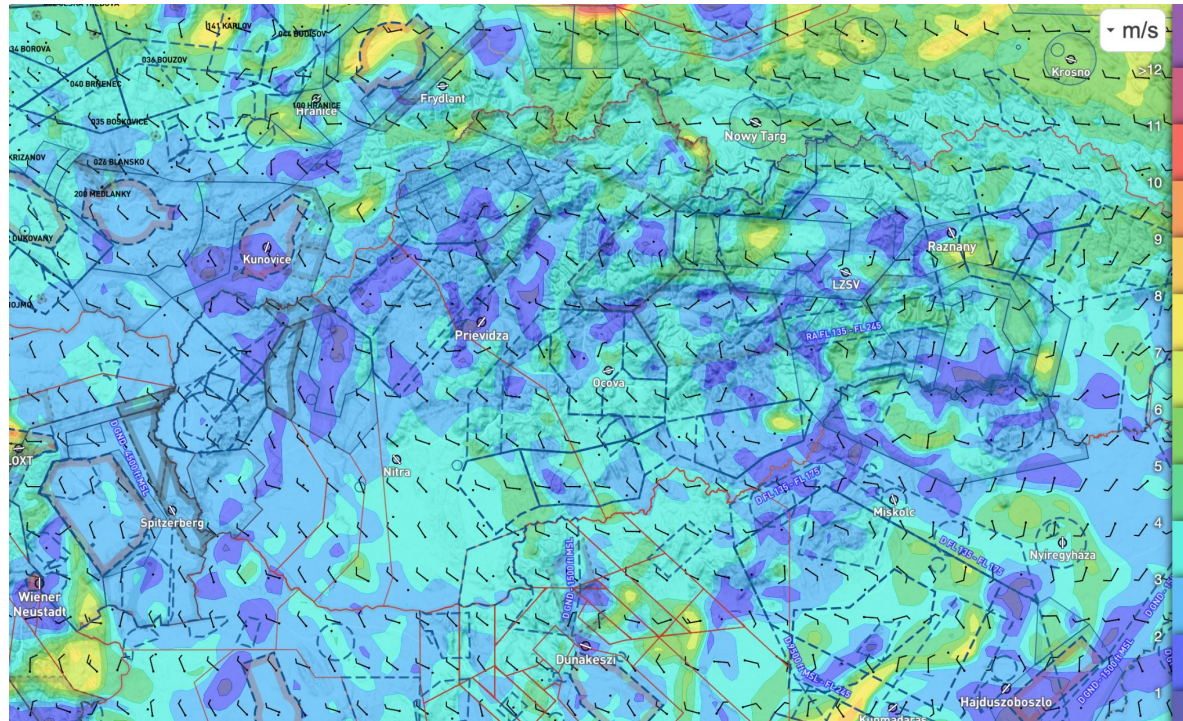
# PRECIPITATION



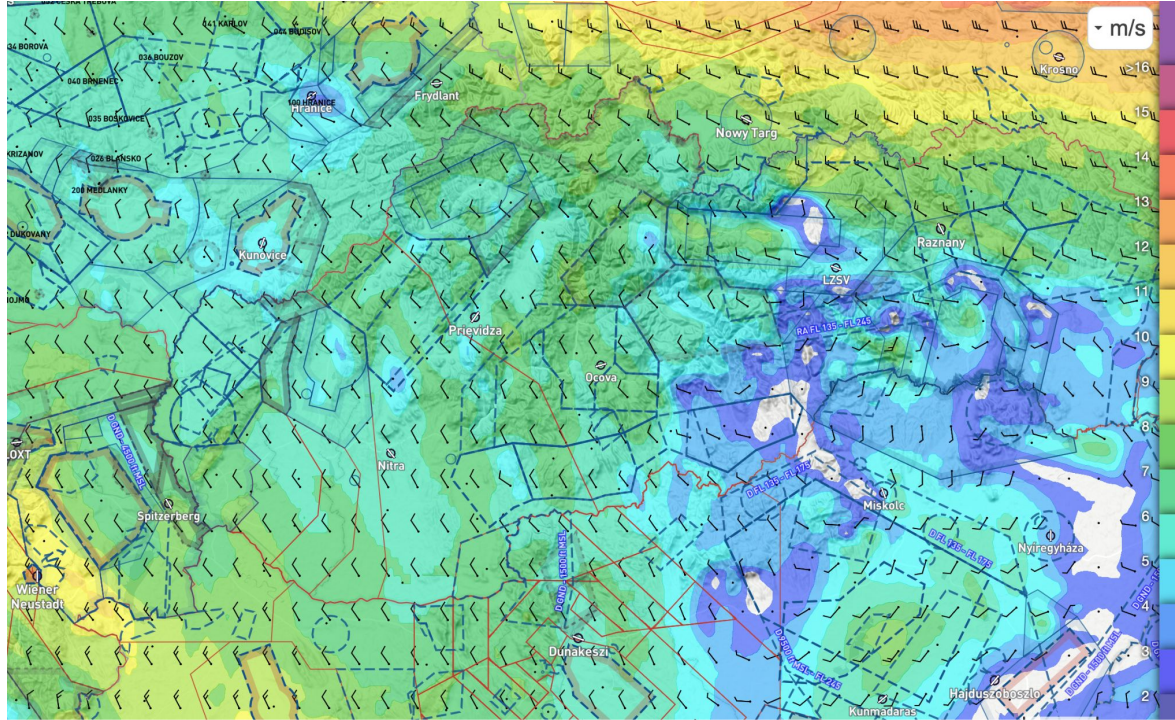
# SURFACE WIND (11:00)



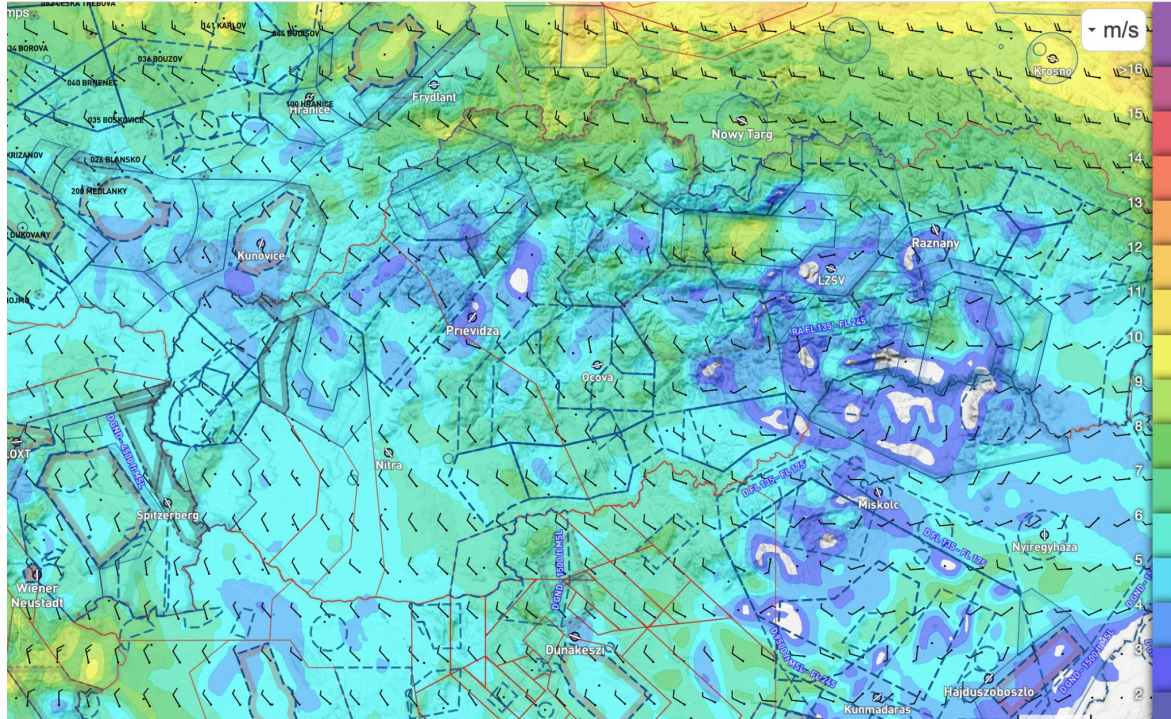
# SURFACE WIND (14:00)



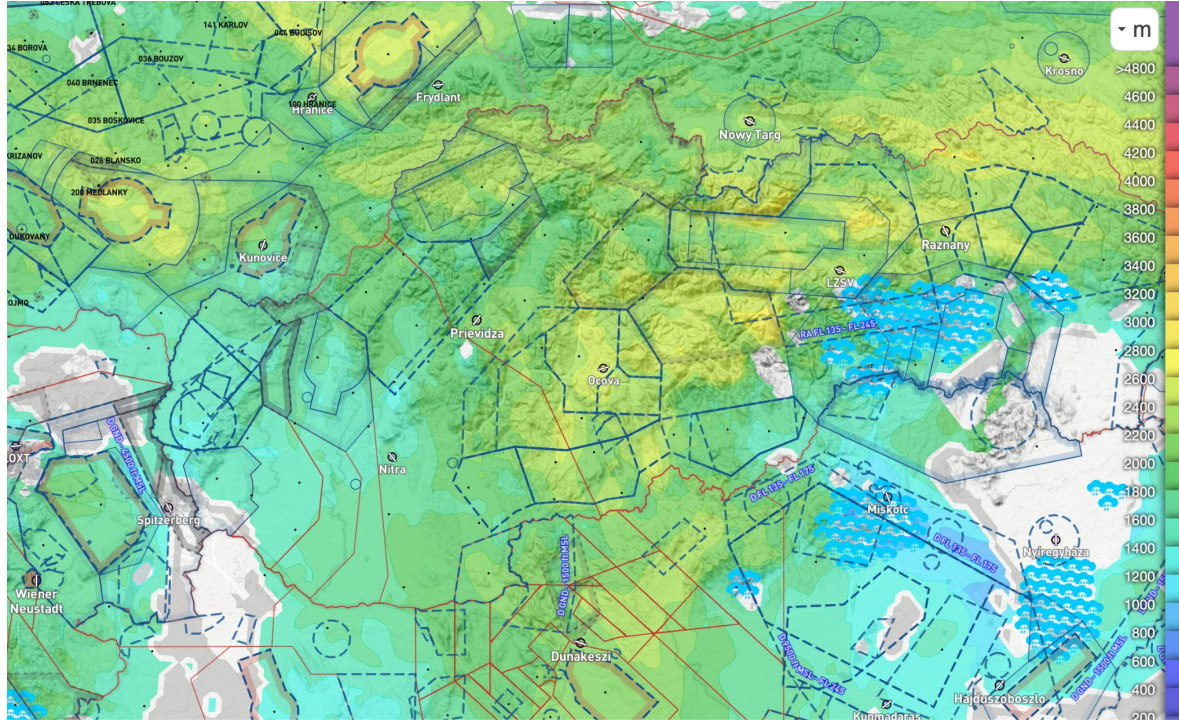
# WIND 1200m MSL (11:00)



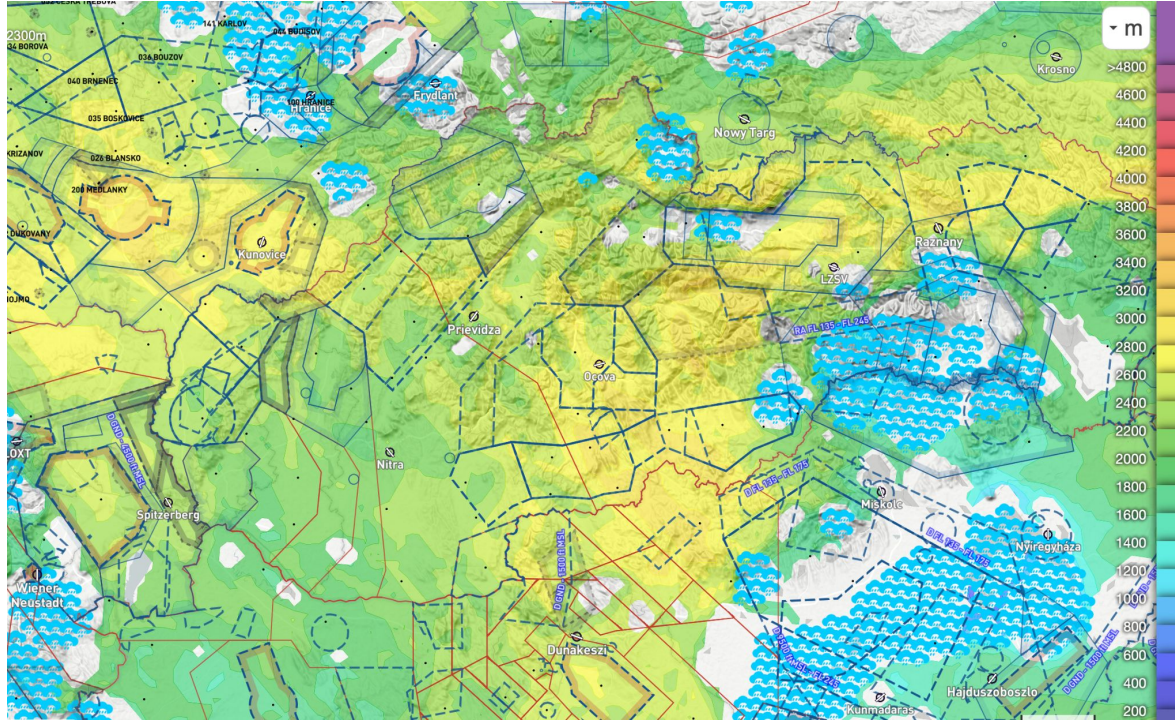
# WIND 1200m MSL (14:00)



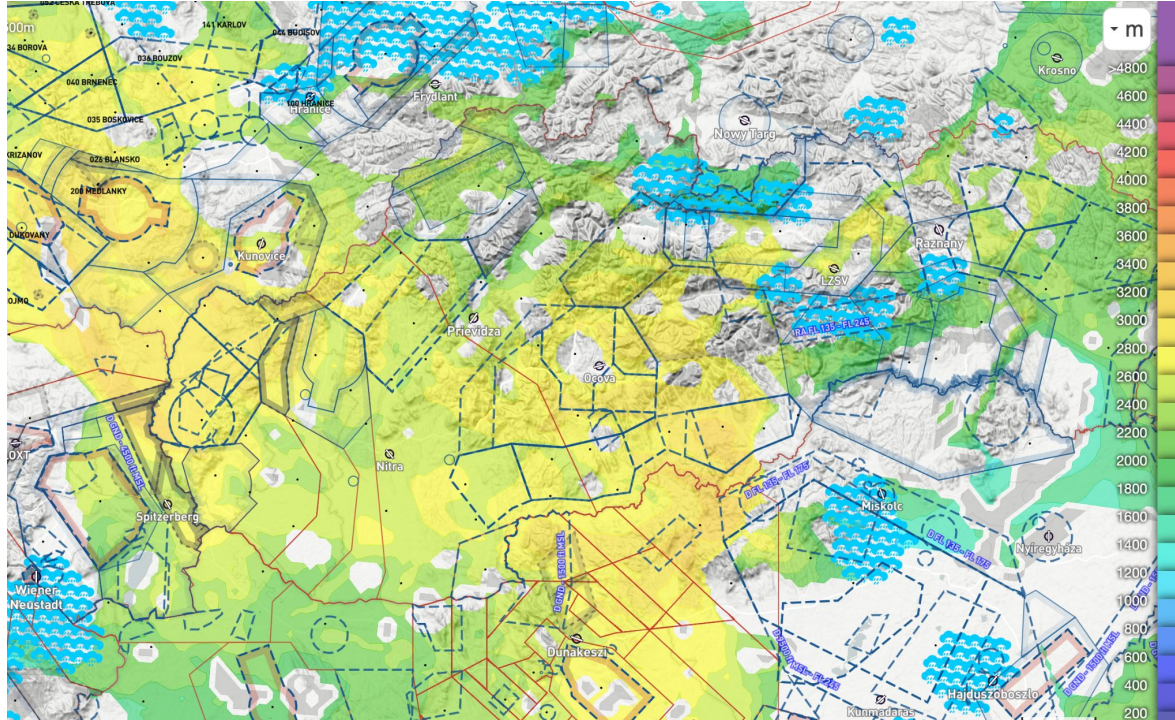
# CUMULUS CHART (11:00)



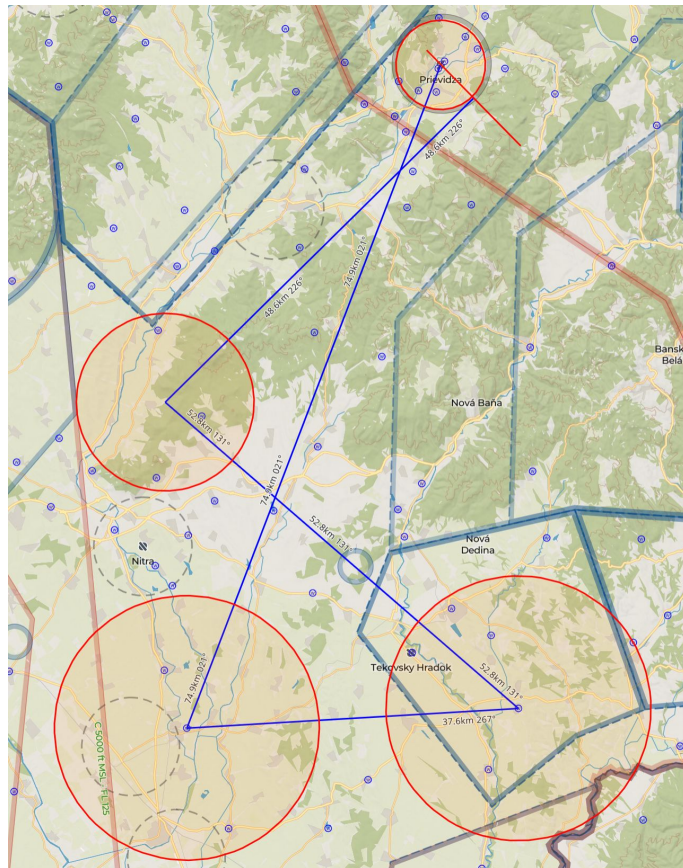
# CUMULUS CHART (14:00)



# CUMULUS CHART (17:00)



# TASK FOR CLUB CLASS



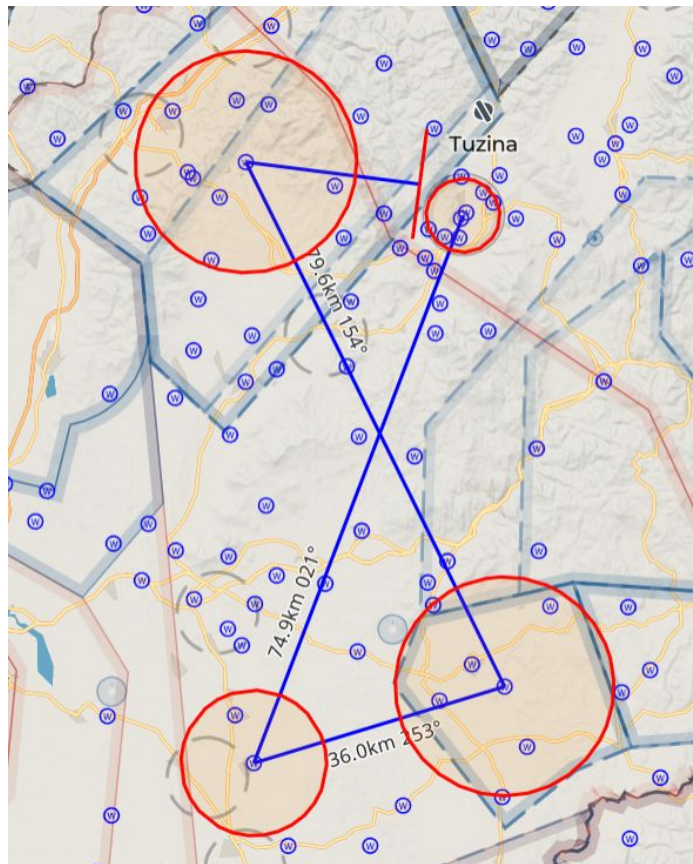
**AAT**

**Task time: 02:15**

**Total:**

**149.97 km / 283.47 km  
(213.91 km)**

# TASK FOR STANDARD CLASS



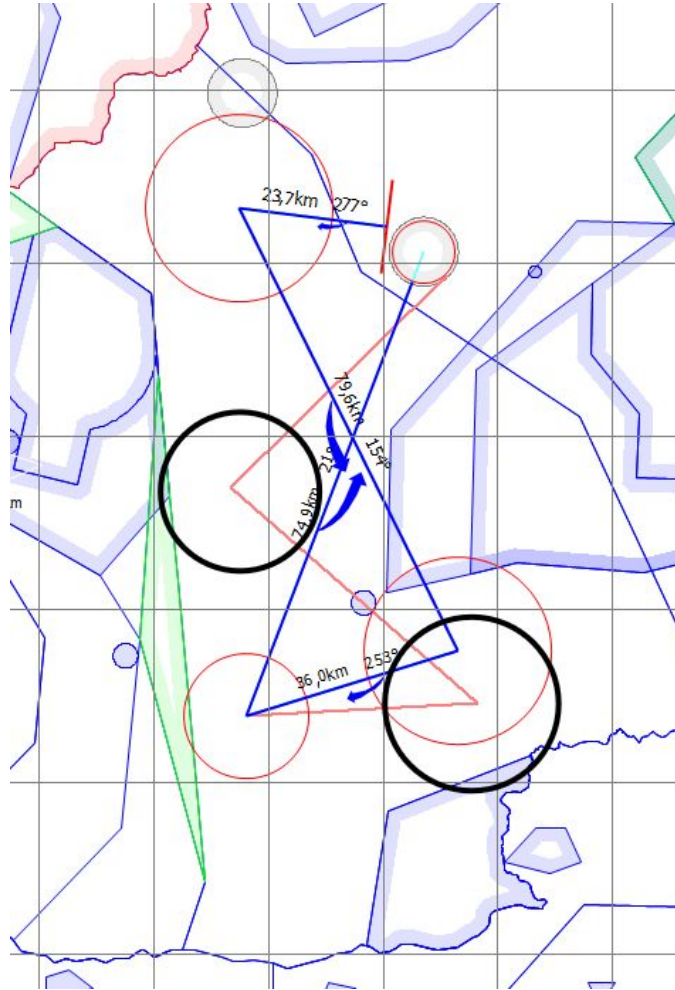
**AAT**

**Task time: 02:15**

**Total:**

**152.72 km / 283.92 km  
(214.26 km)**

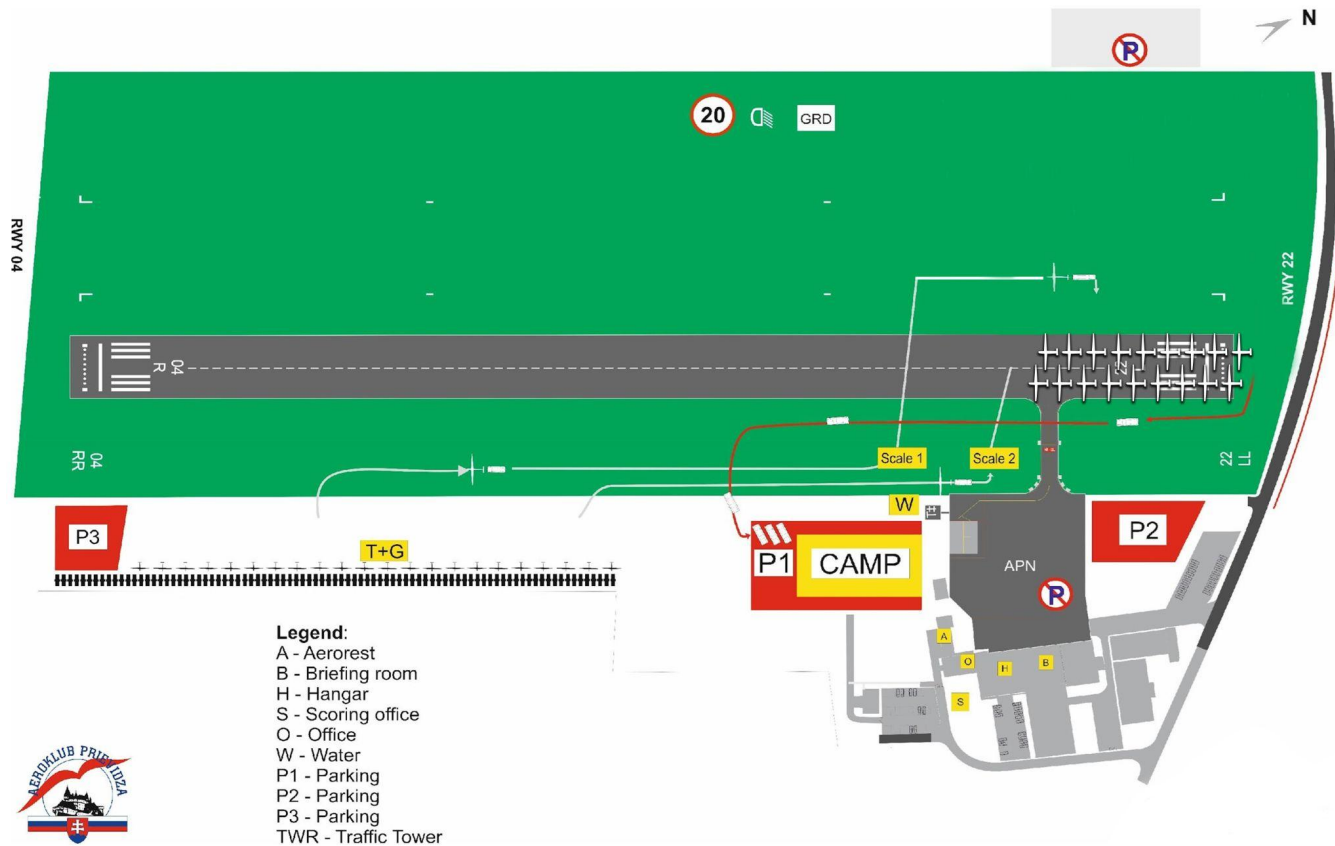
# TASK OVERLAY



# AIRSPACE



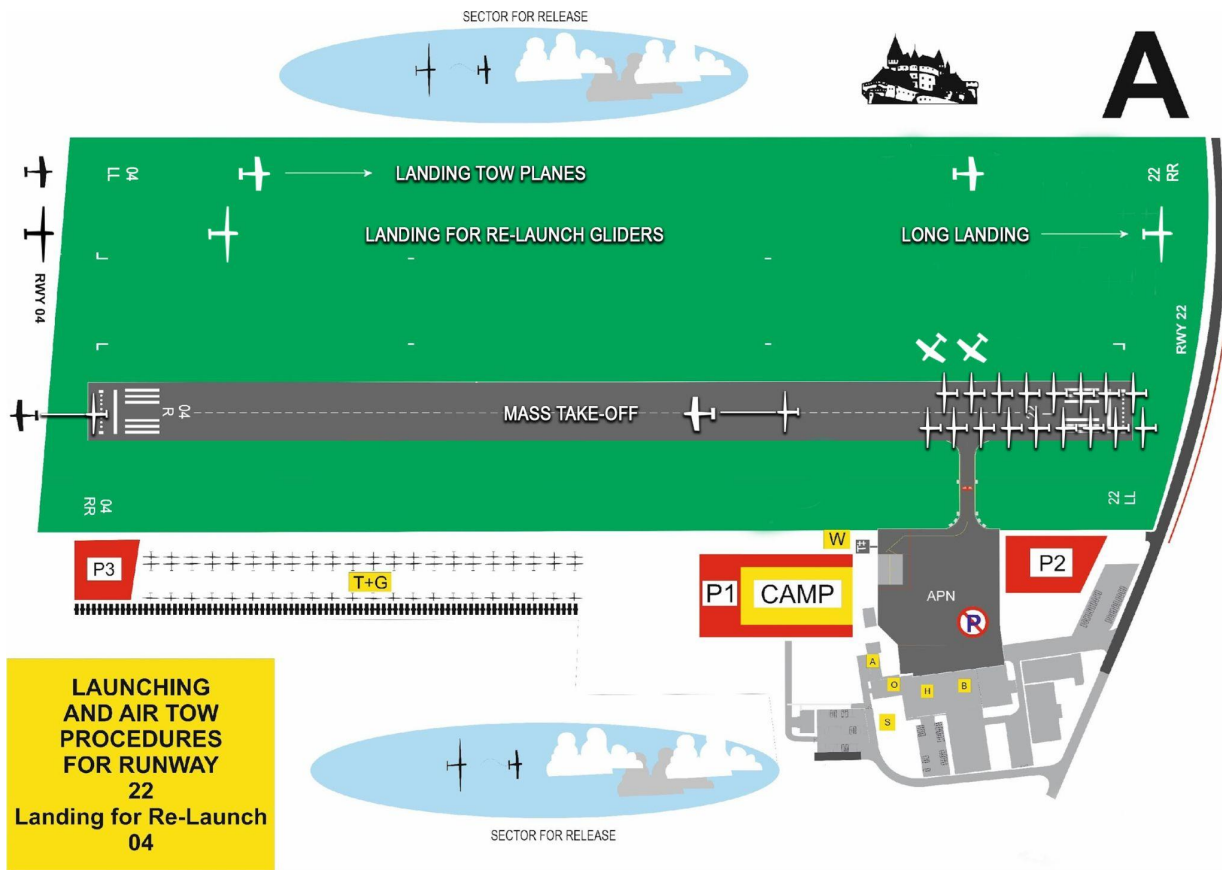
# GRID ORDER RWY 22



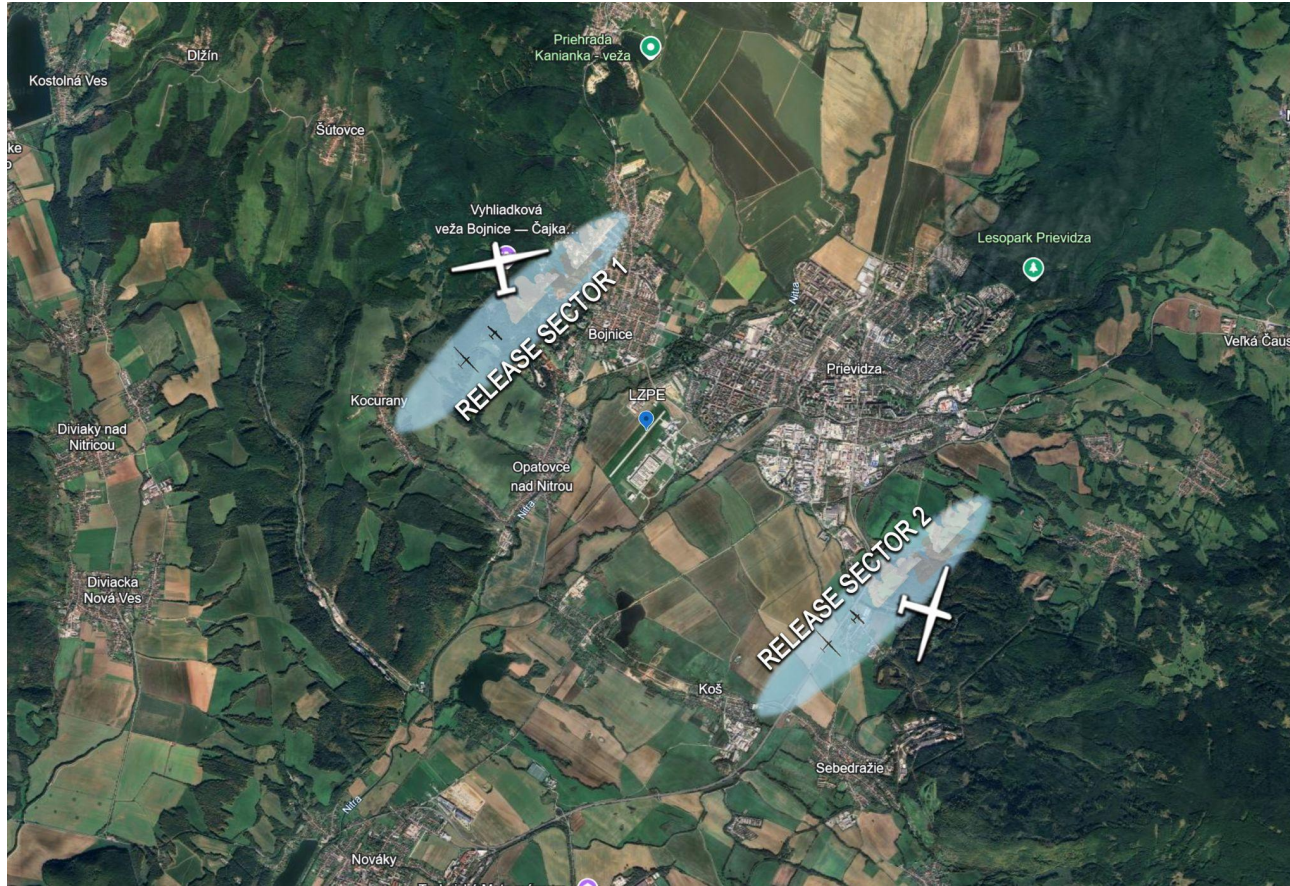
# FREQUENCIES

- ★ TAKE OFF FREQUENCY: **122,605**
- ★ **30** MINUTES AFTER START LINE OPENING &  
FOR FINISHES: **123,055**

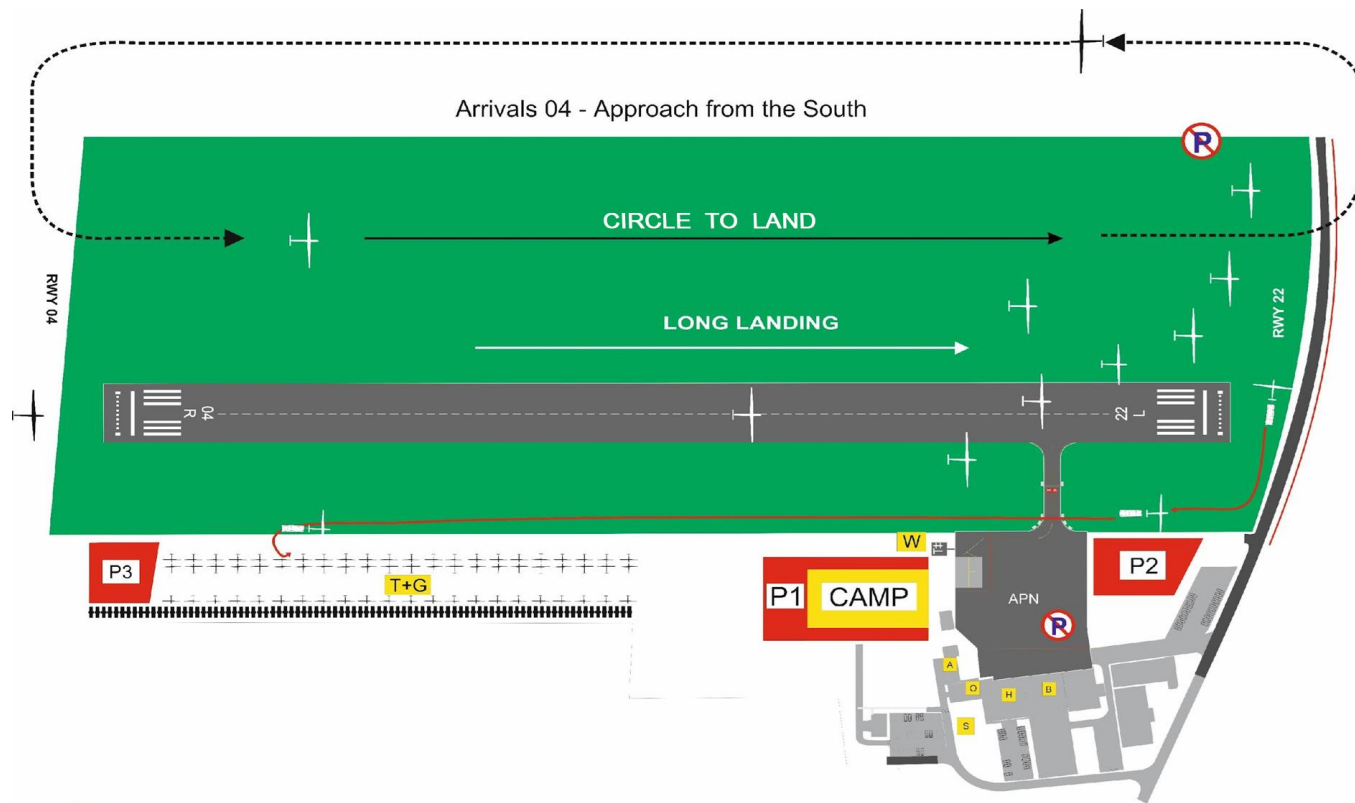
# TAKE-OFF RWY 22



# RELEASE SECTORS



# LANDING RWY 04



# START PROCEDURE

- ★ PEV WAIT TIME - **10 MINUTES**
  - ★ PEV START WINDOW - **5 MINUTES**
  - ★ MAXIMUM NUMBER OF STARTS - **THREE (3)**
- 
- ★ PRE-START ALTITUDE LIMIT  
**NOT SET** FOR TODAY

# START LINE OPENING

START LINE WILL OPEN

**30 MINUTES**

AFTER LAST LAUNCH IN CLASS



# FINISH RING

★ FINISH RING: 5 km

★ HEIGHT ON RING: 460 m AMSL

# IGC FILE DELIVERY

★ SEND ALL FILES TO

**igcprievidza@gmail.com**

★ FILE DELIVERY TIME **45 MIN** AFTER LANDING

★ INCLUDE **CN** IN EMAIL SUBJECT



# YESTERDAY WRAP-UP

★ THANK YOU FOR SMOOTH DE-GRIDDING



# KIND REMINDER

- ★ FLY SAFELY
- ★ LONG LANDINGS
- ★ FOLLOW LANDING PROCEDURES
- ★ LEAVE THE RWY ASAP AFTER LANDING

# PHOTOS OF THE DAY



credit to: **Nicolas CAUDRELIER**



credit to: **Antonio KALIK**



I *need  
miss  
want  
love* Gliding

Have a nice flight! 