

# DAILY BRIEFING

COMPETITION DAY 9 - 14/07/2025



# CLUB CLASS DAILY WINNERS

DAY 8 - 13/07/2025



2<sup>nd</sup> place

**KIM TOPPARI**  
**KT**  
**[FIN]**



1<sup>st</sup> place

**VIT MORKOVSKY**  
**CX**  
**[CZE]**



3<sup>rd</sup> place

**MICHAELA KRIZOVA**  
**A3**  
**[CZE]**

# STANDARD CLASS DAILY WINNERS

DAY 8 - 13/07/2025



2<sup>nd</sup> place  
**LASSE EDSLEV  
LE**  
[DNK]



1<sup>st</sup> place  
**LUKAS KRIZ**  
**AU**  
[CZE]



3<sup>rd</sup> place  
**CLEMENT DE PECHY**  
**2E**  
[FRA]



Paputchka



@paputchapizzabar

[www.paputchapizzabar.sk](http://www.paputchapizzabar.sk)

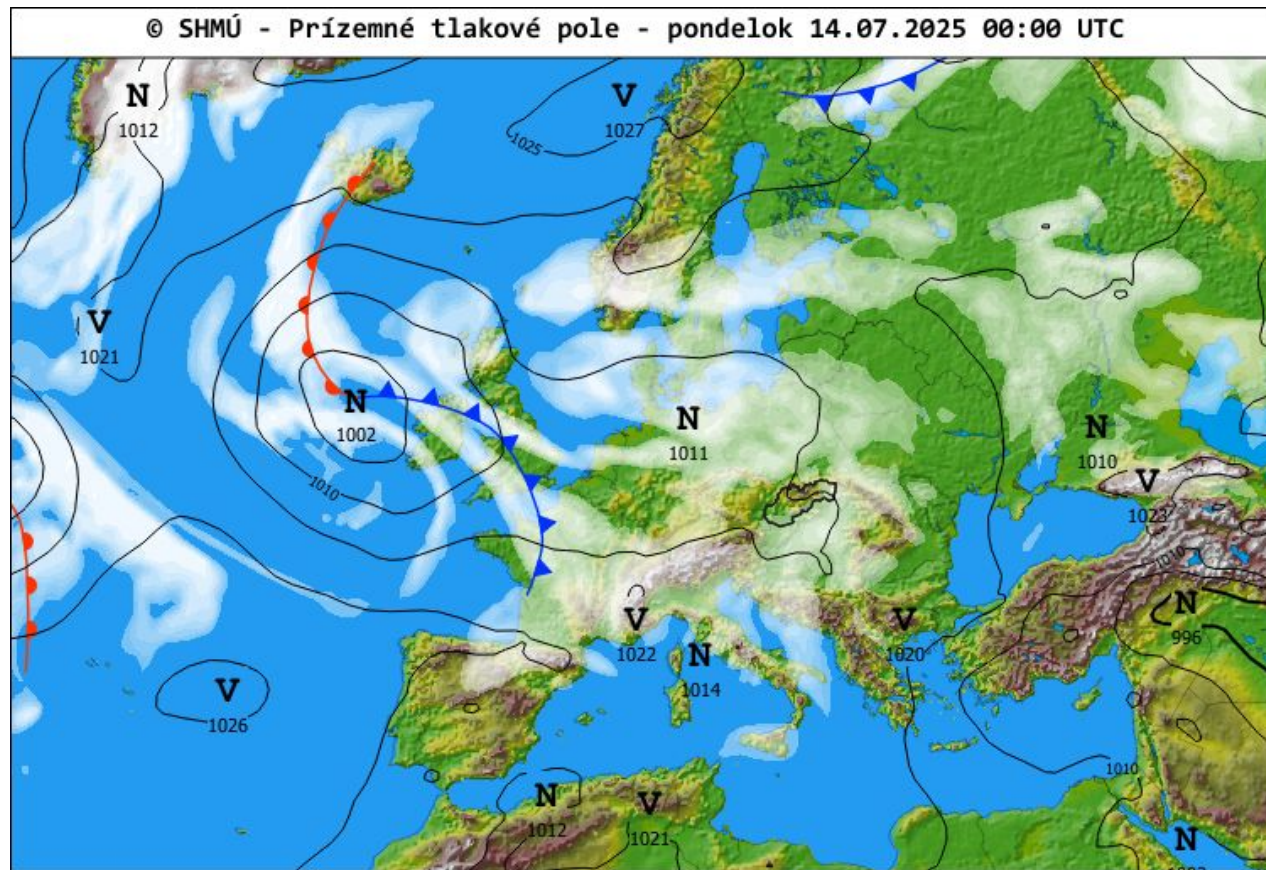
Jozefa Gregora Tajovského 770, 971 01 Prievidza



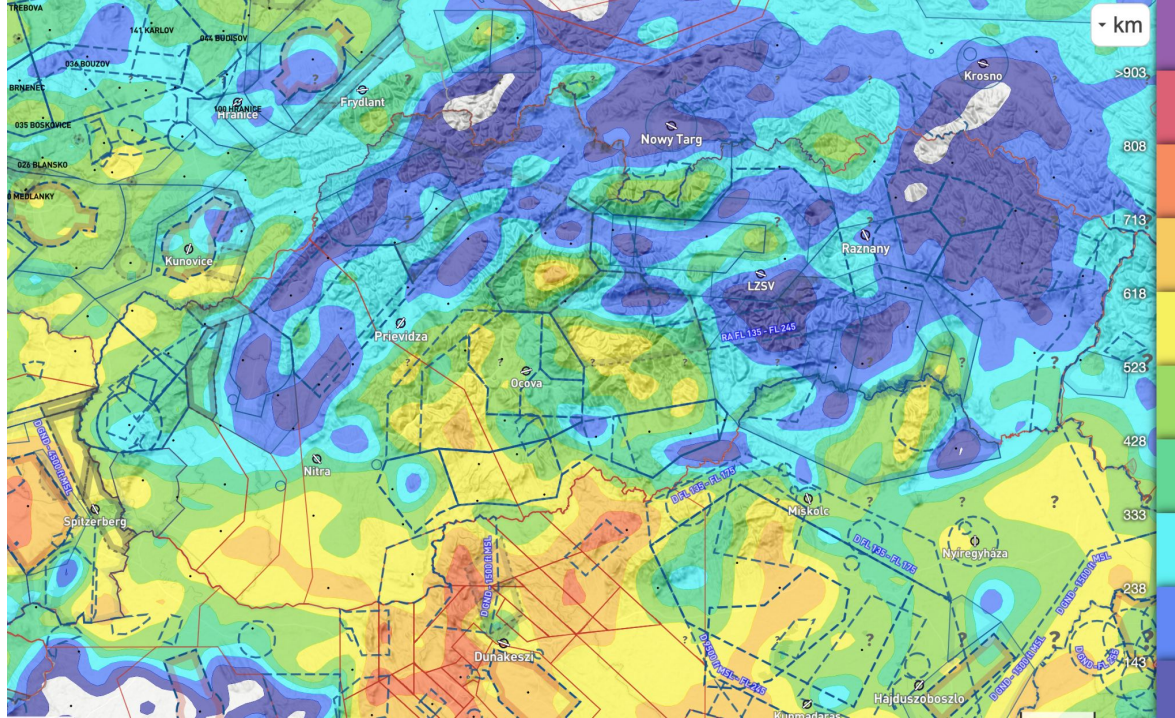
# WEATHER



# SYNOPTICS

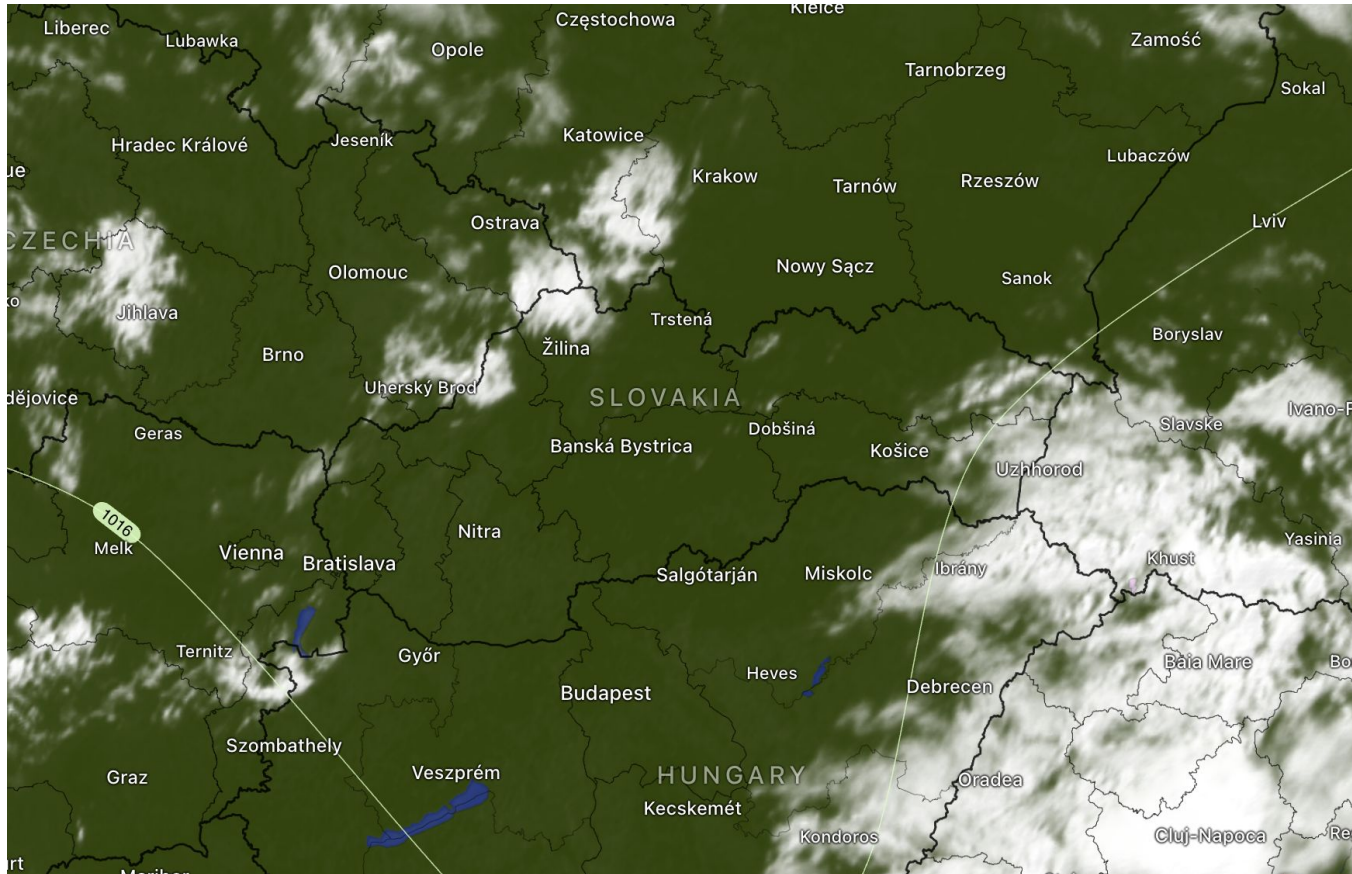


# DAY USABILITY

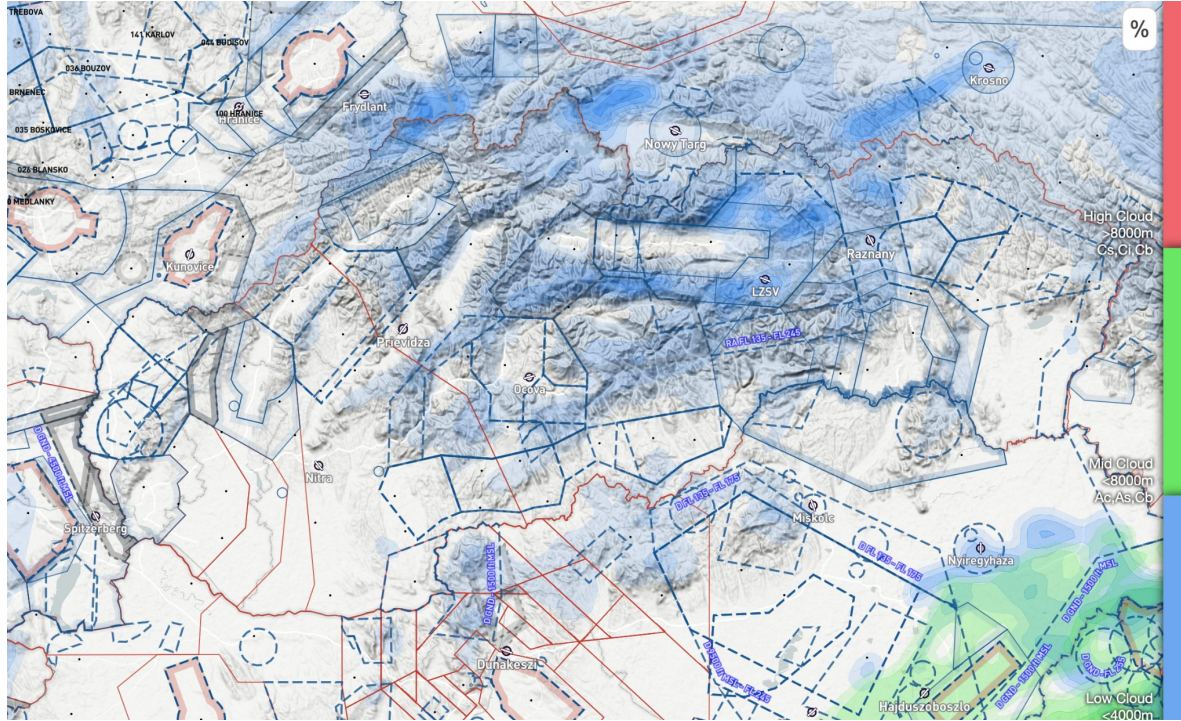




# SATELLITE (9:35)

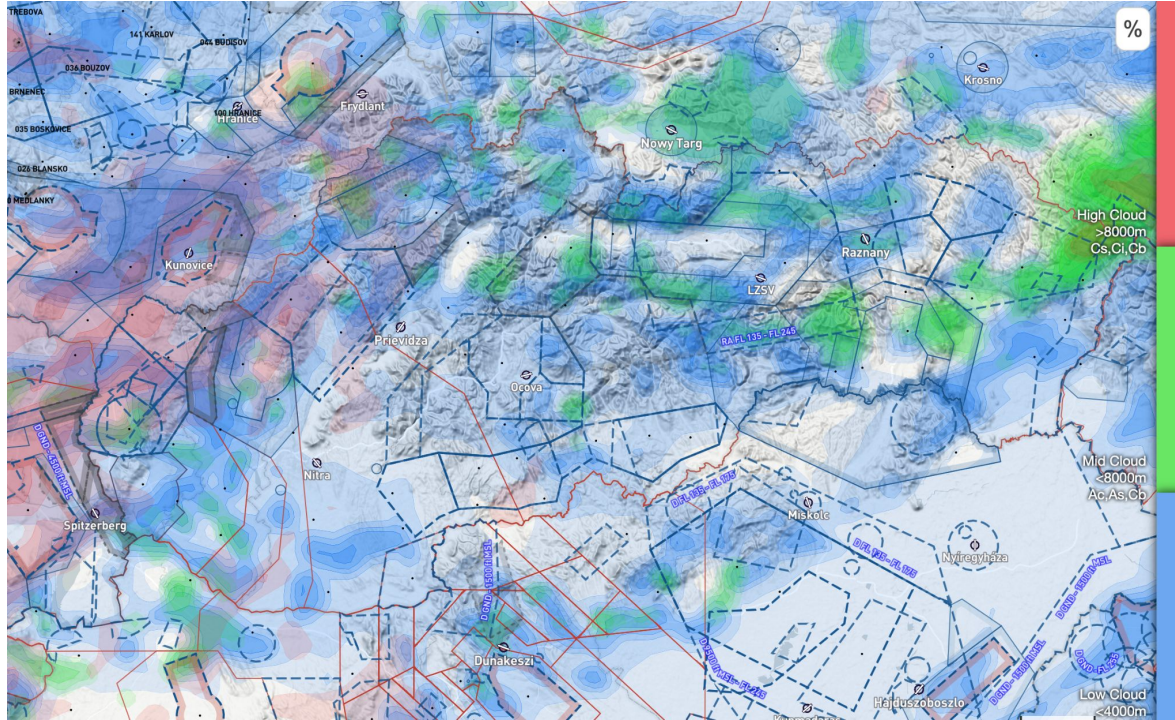


# CLOUD COVER (11:00loc)



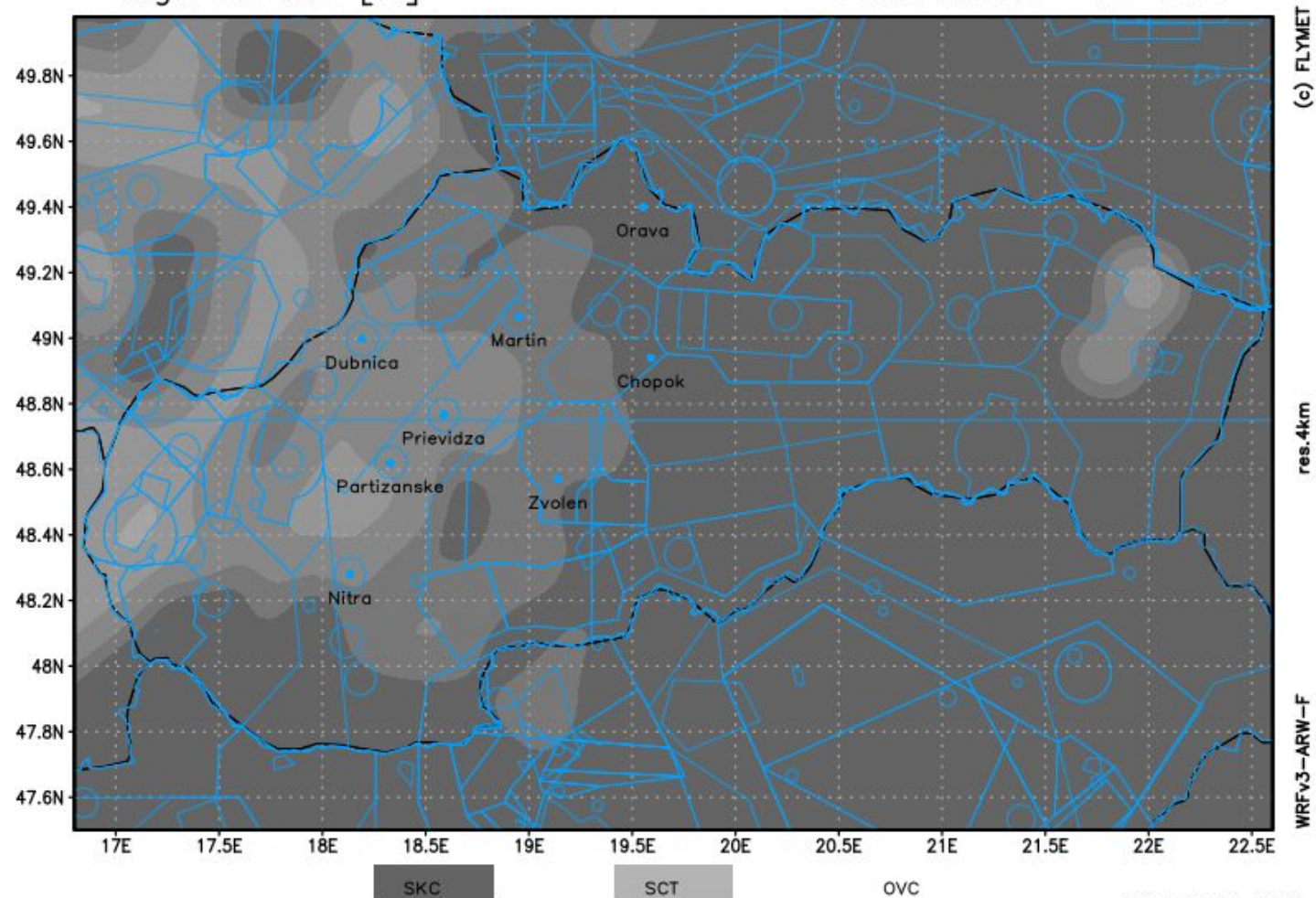


# CLOUD COVER (15:00loc)



high clouds [%]

14.07.2025 13 UTC





This meteorological map displays cloud cover and precipitation patterns over Central Europe. The map includes labels for various cities and regions, such as Krosno, Nowy Targ, Rzeszów, and Nitra. It also features a legend for cloud types and heights, and a scale bar.

**Legend:**

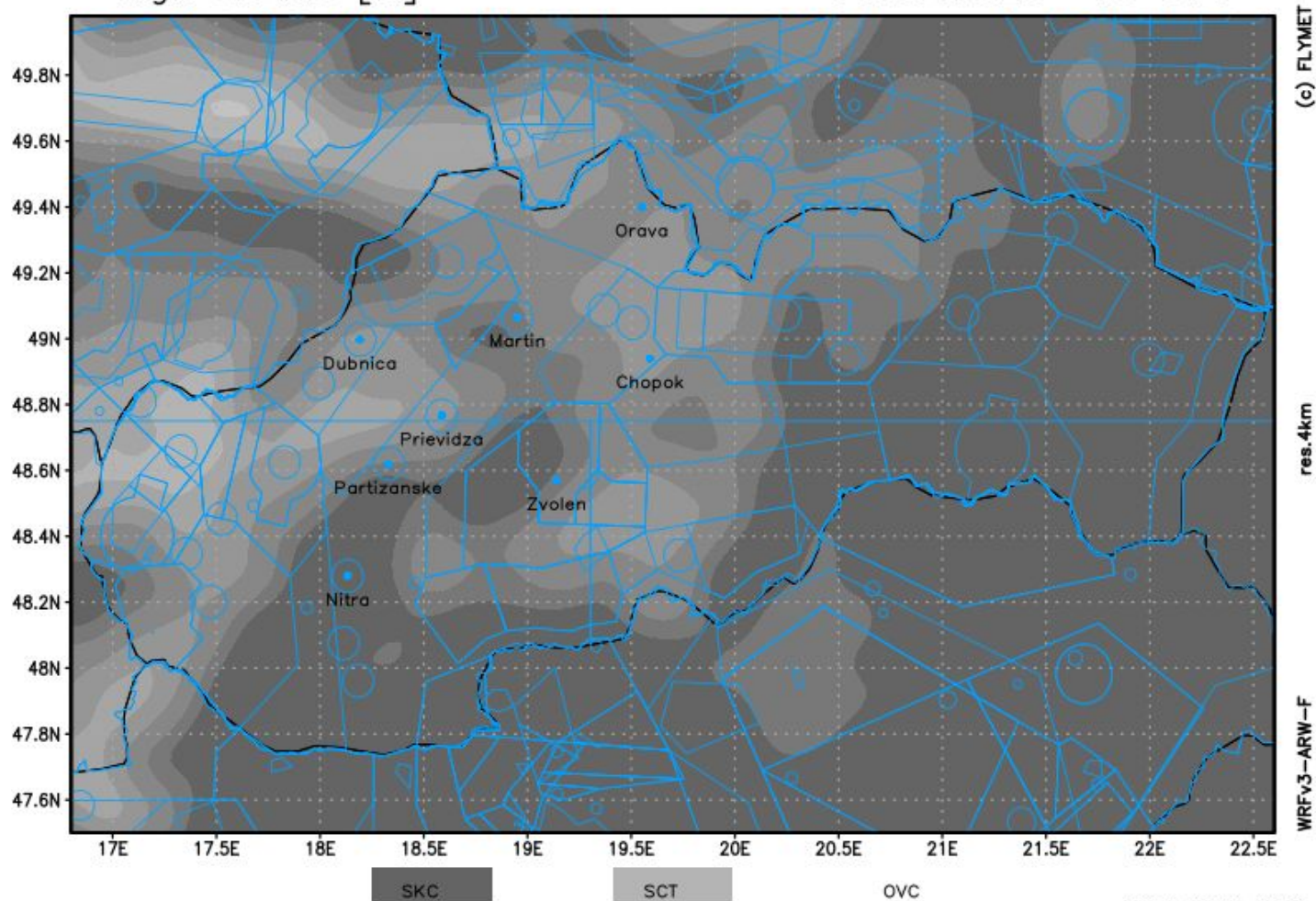
- High Cloud >8000m Cs Ci Cb
- Mid Cloud <8000m Ac As Cb
- Low Cloud <4000m

**Scale:** 0 100 200 km

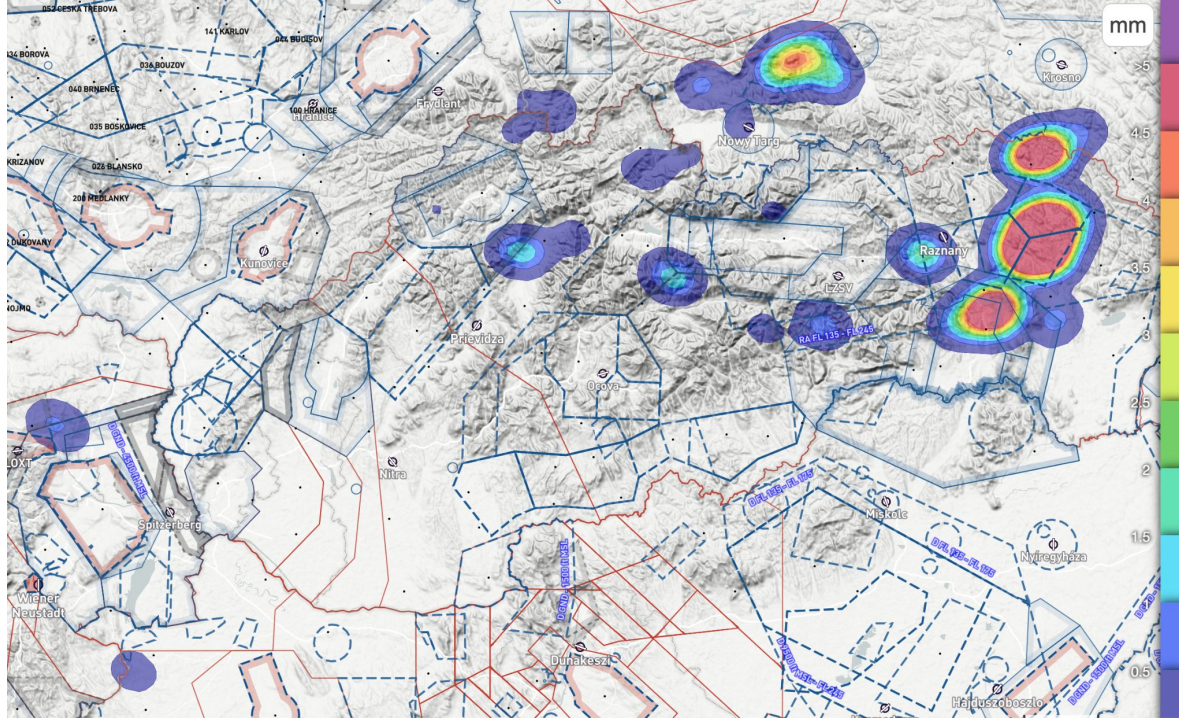


high clouds [%]

14.07.2025 15 UTC



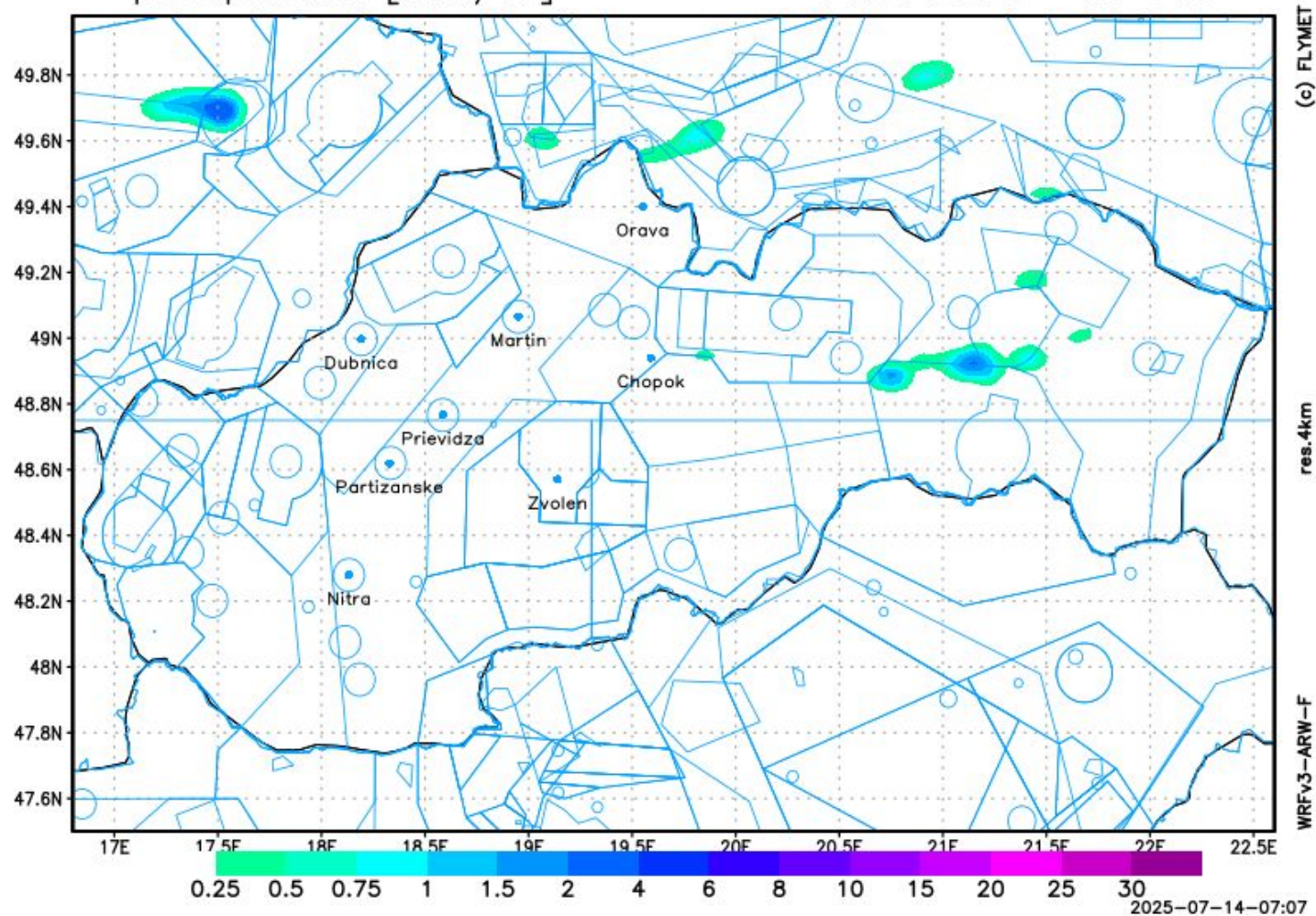
# PRECIPITATION (14:00)



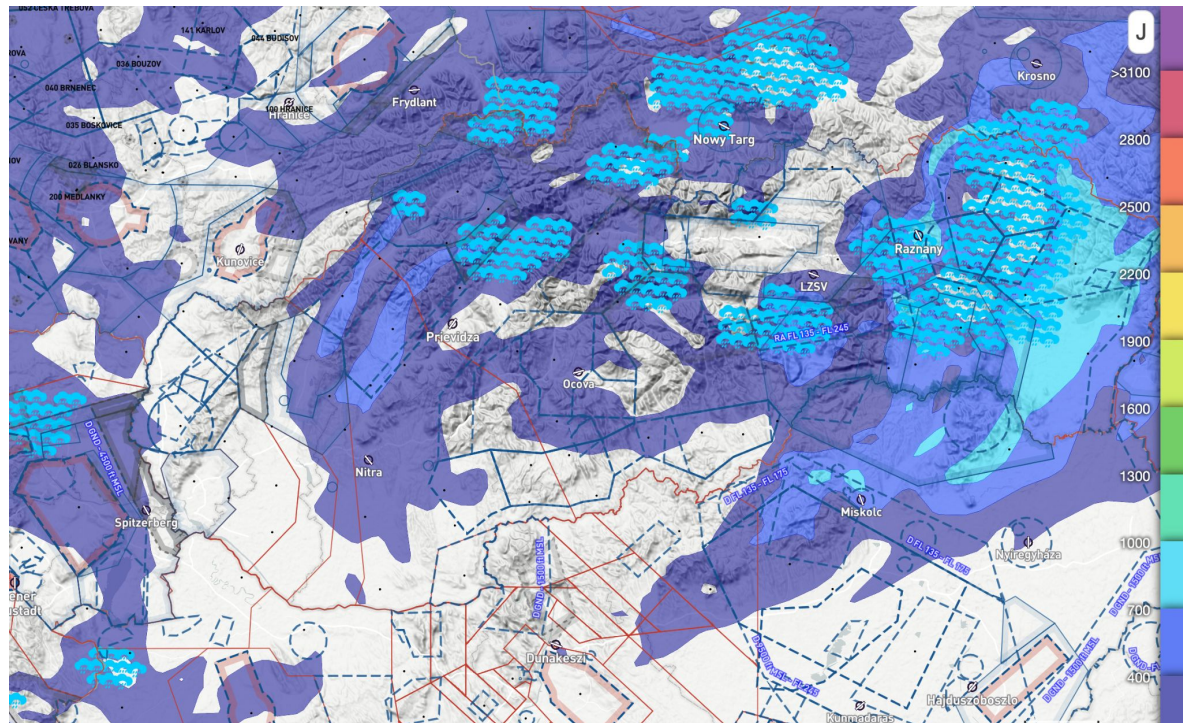


precipitation [mm/hr]

14.07.2025 12 UTC

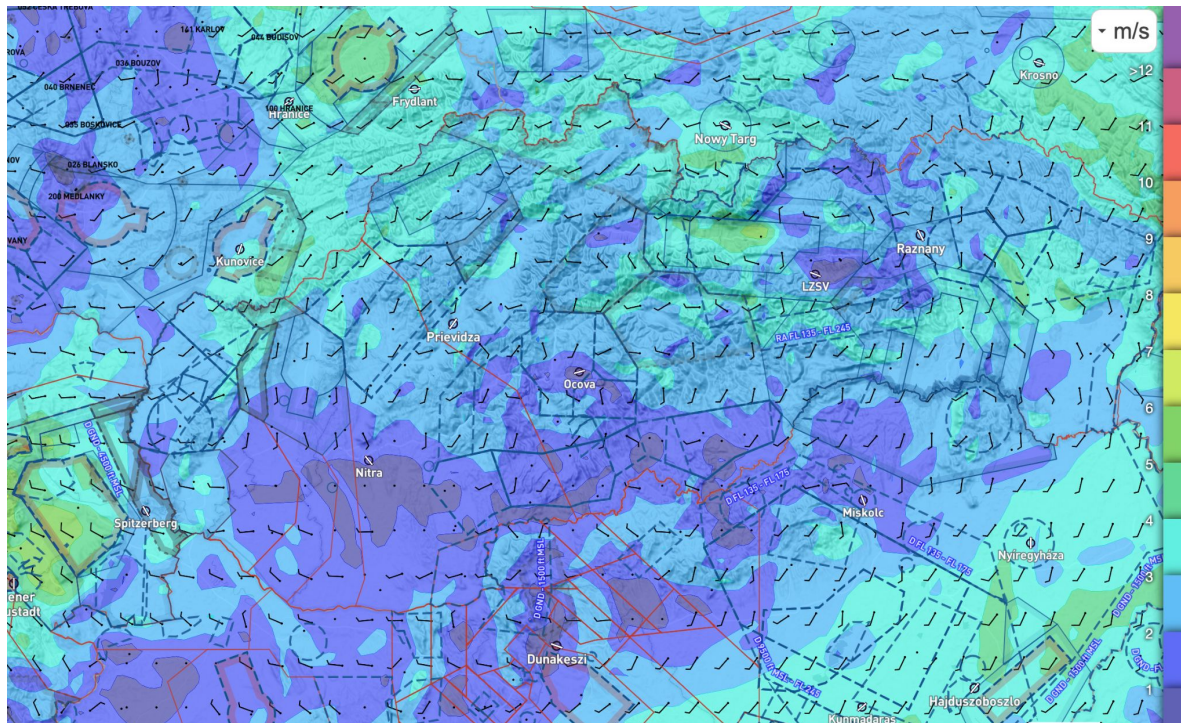


# CAPE (14:00)

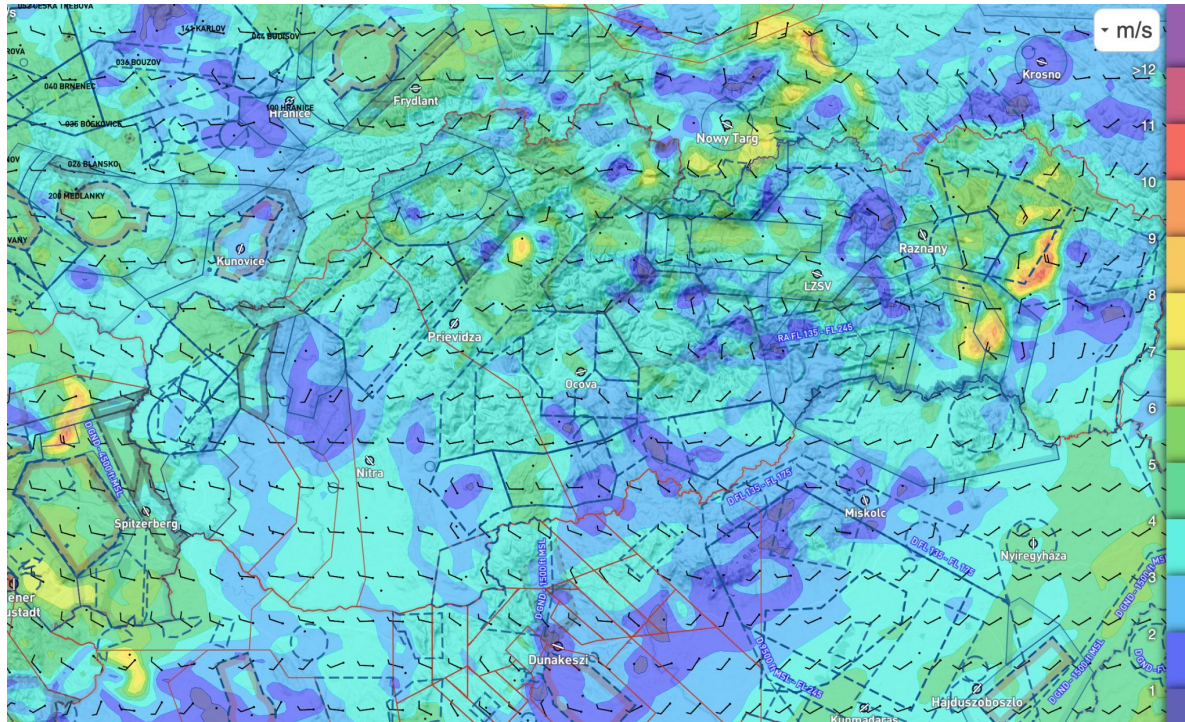




## SURFACE WIND (11:00)

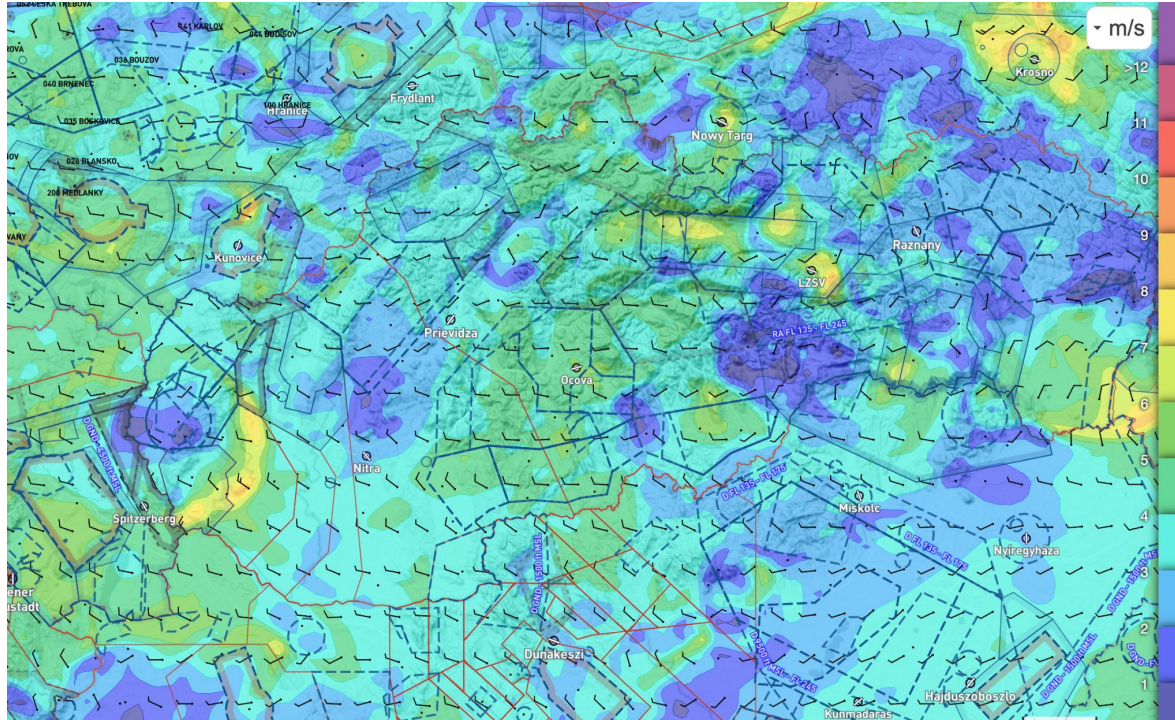


# SURFACE WIND (14:00)

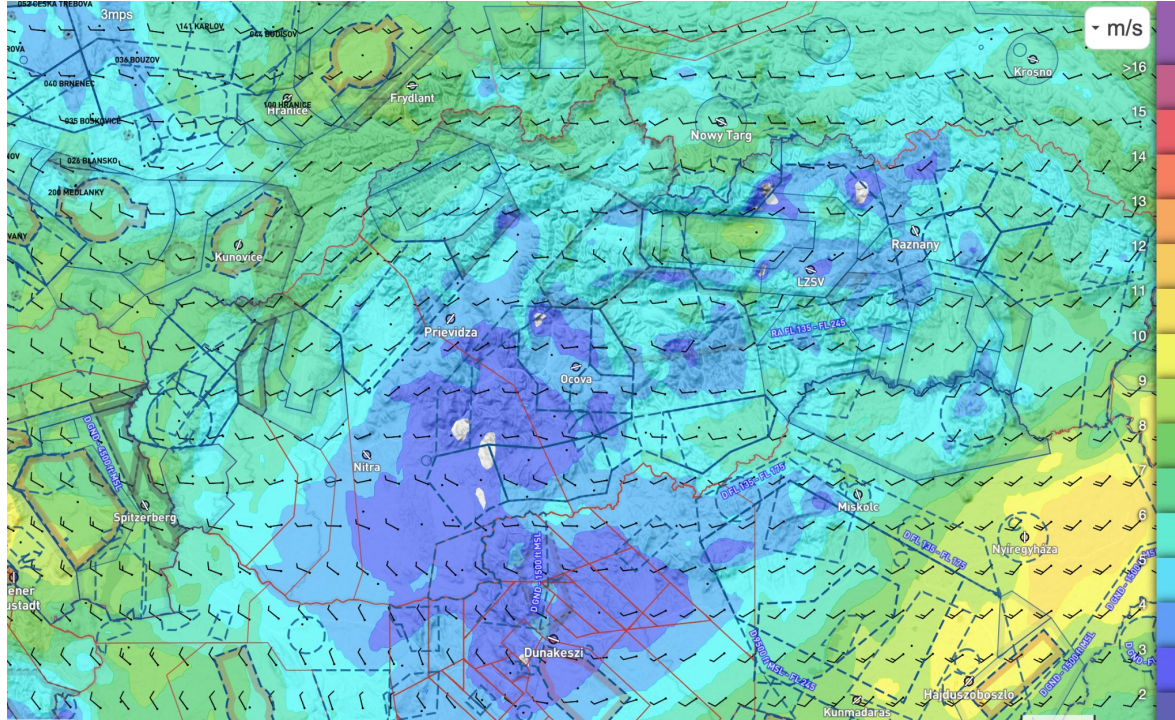




## SURFACE WIND (14:00)

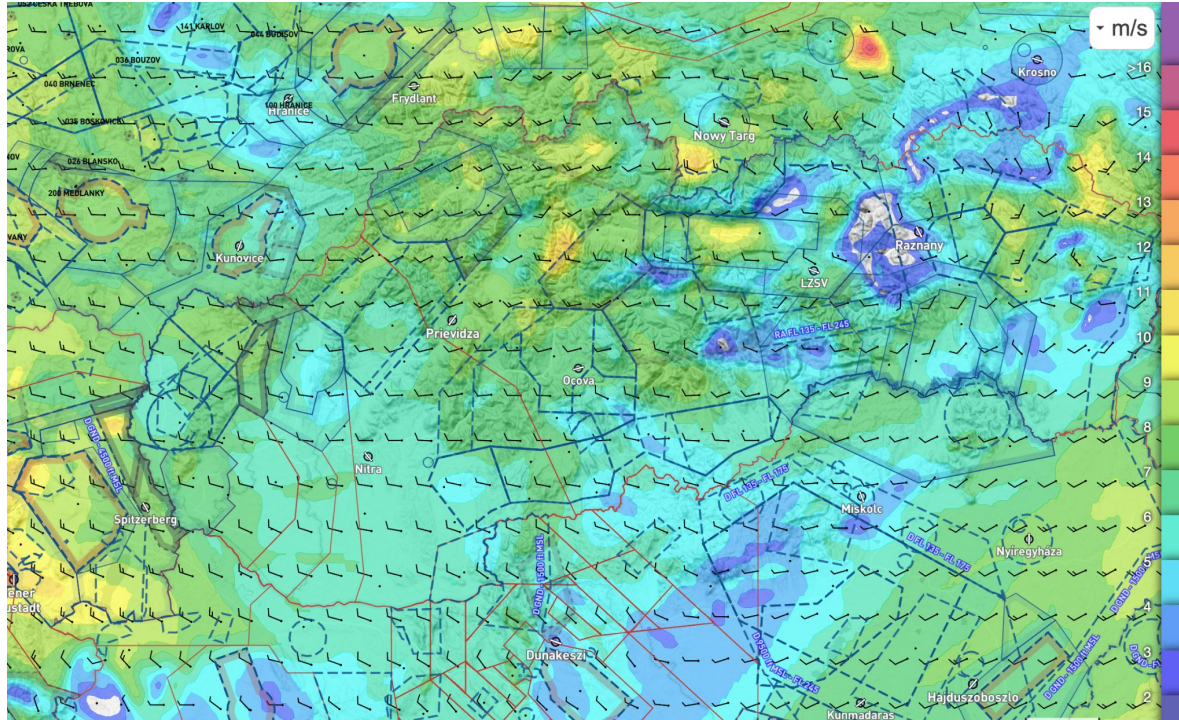


# WIND 1200m MSL (11:00)

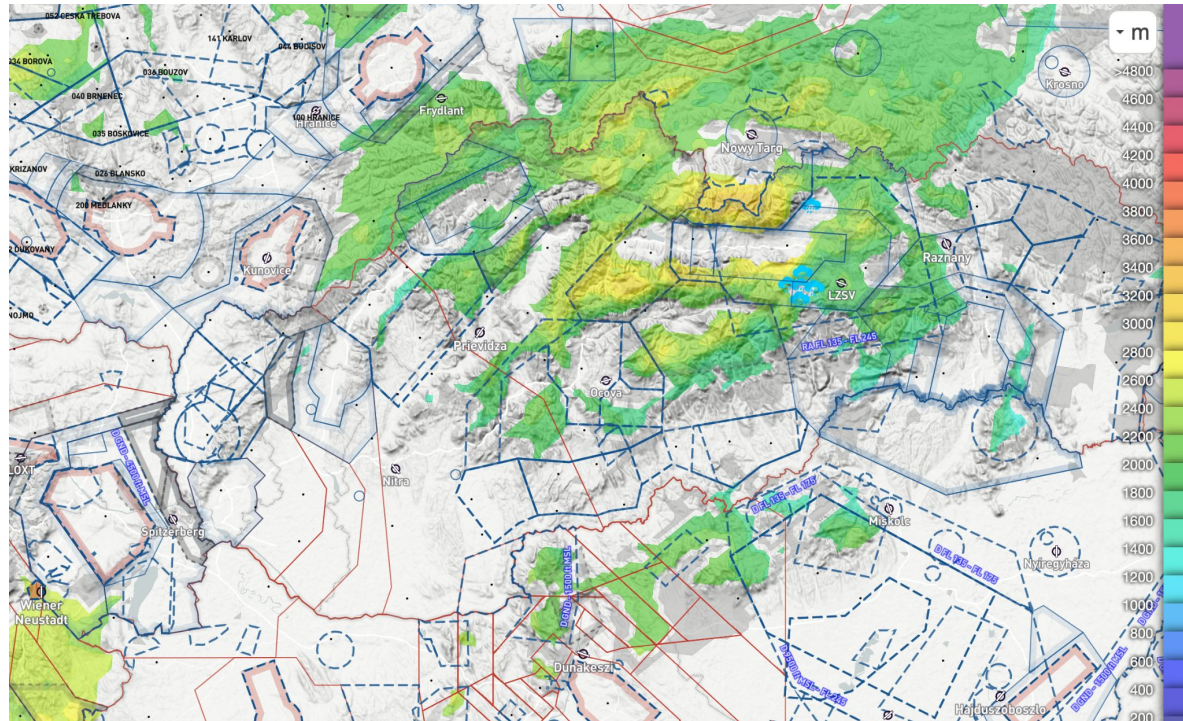




# WIND 1200m MSL (15:00)

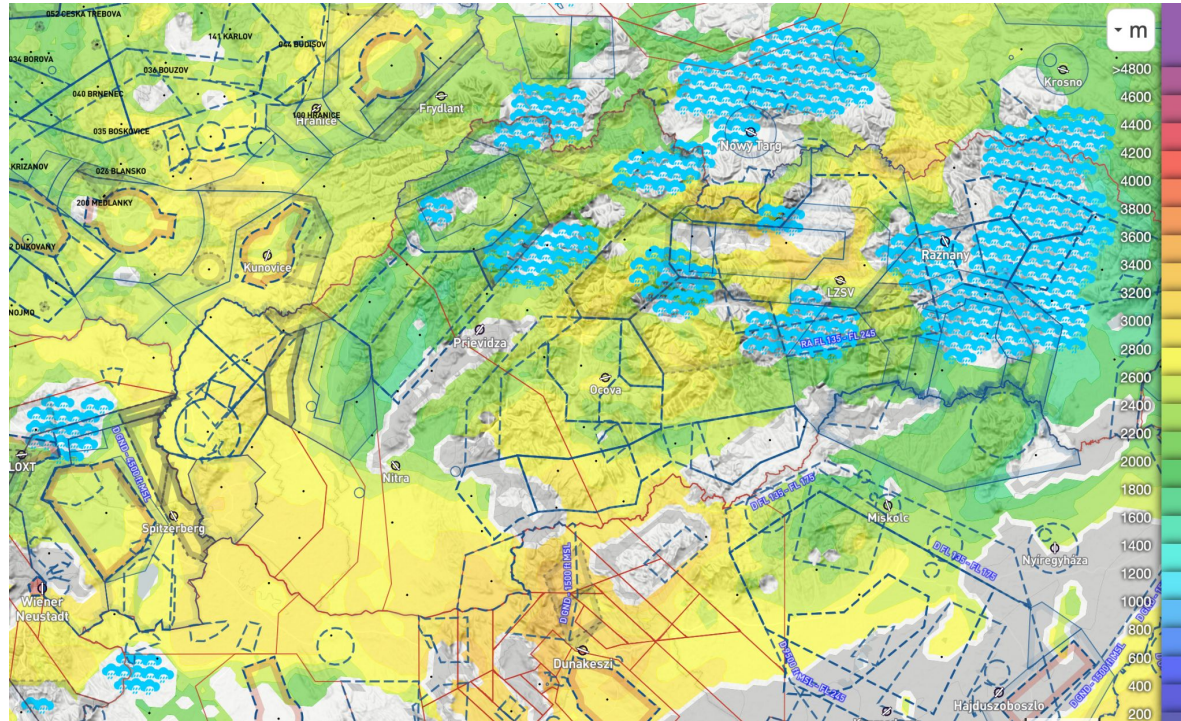


# CUMULUS CHART (11:00)

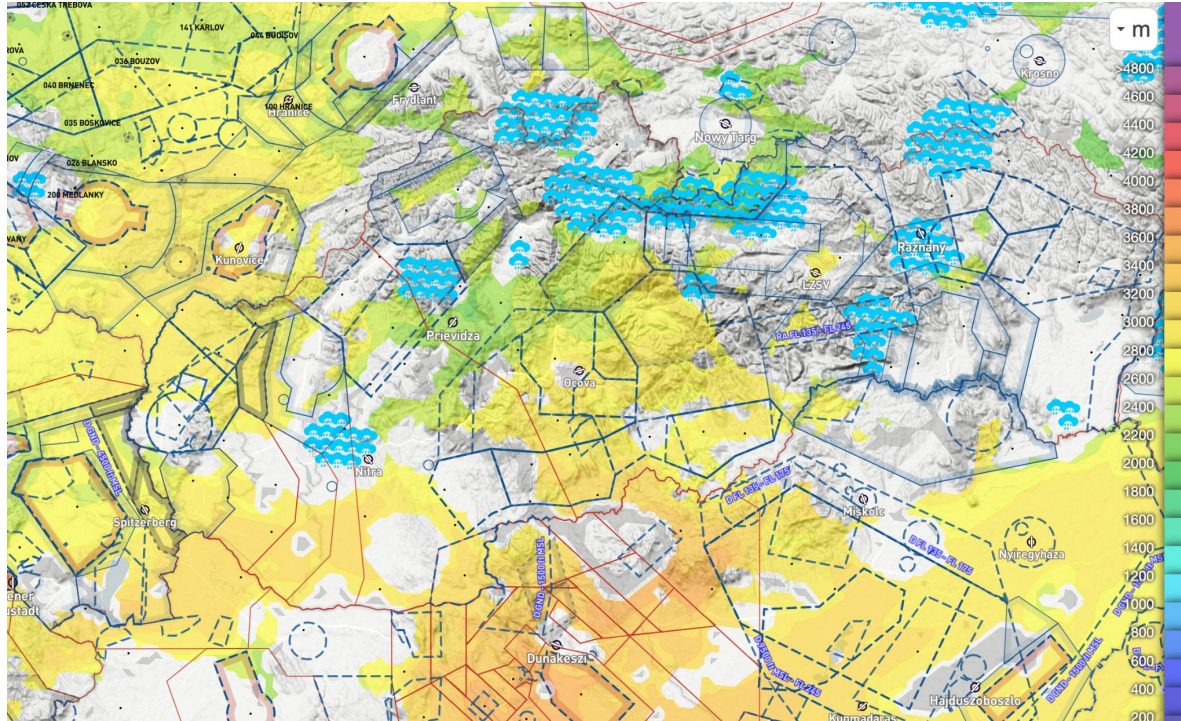




# CUMULUS CHART (14:00)

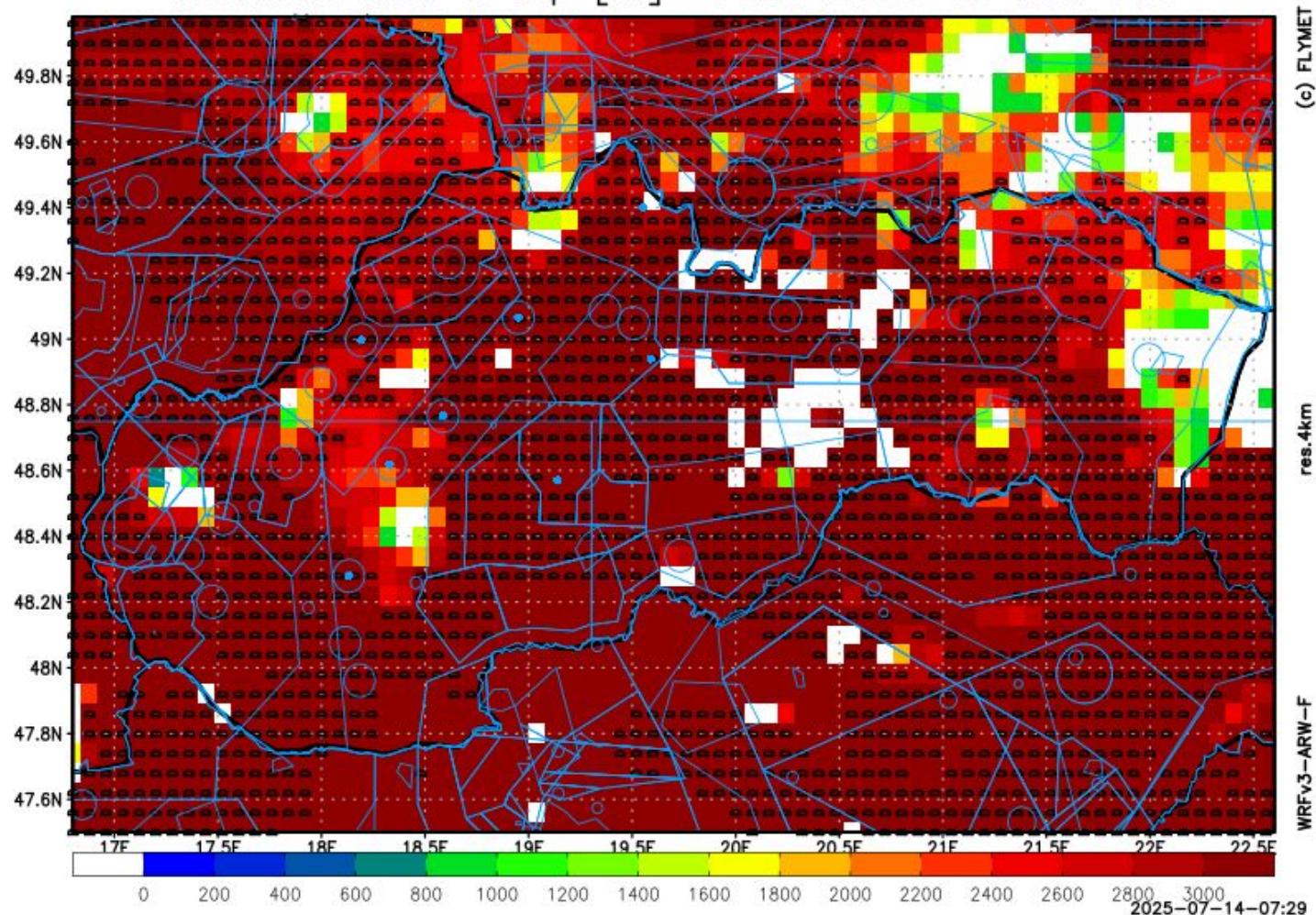


# CUMULUS CHART (17:00)

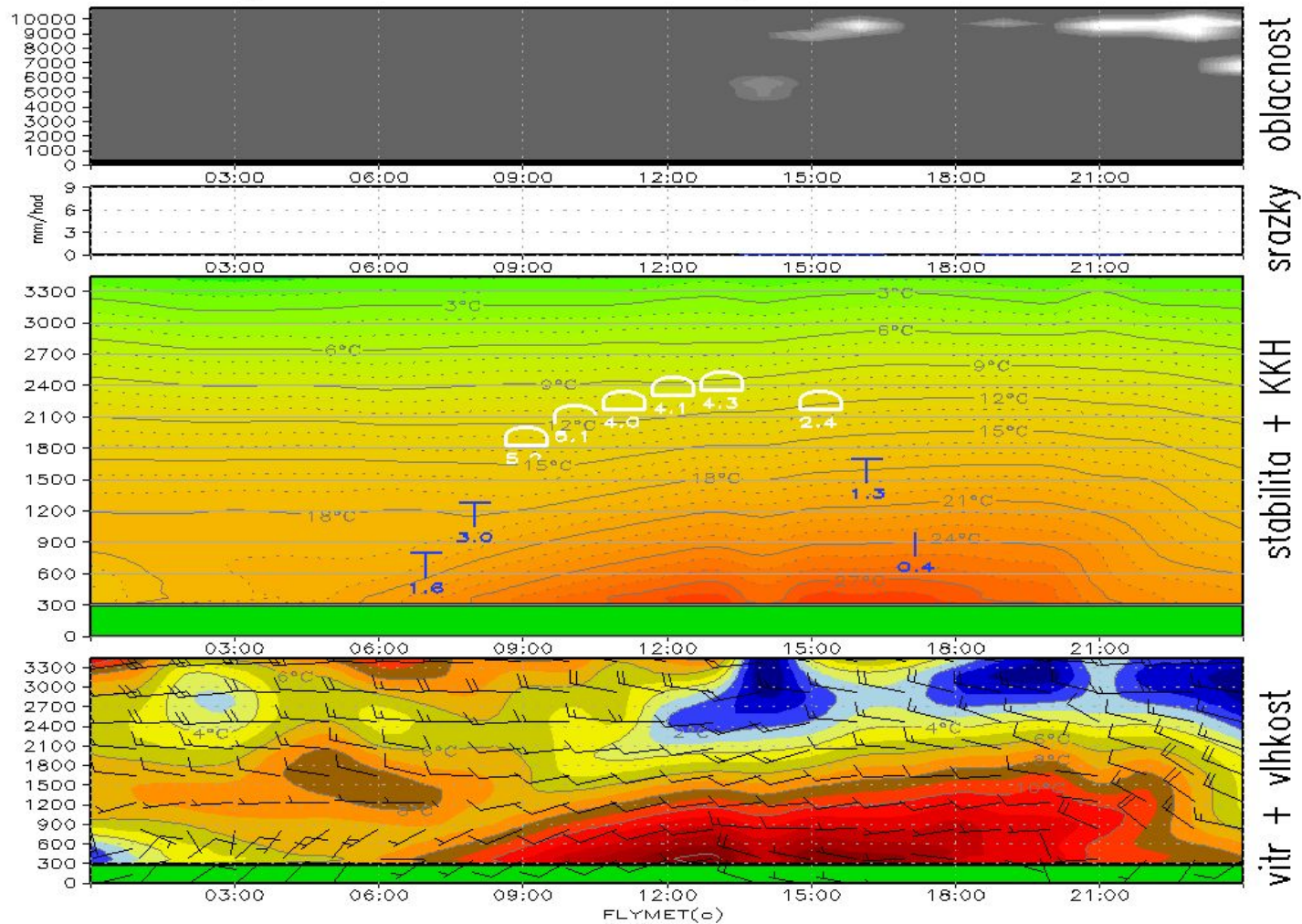




# Thermals kind & top [m] 14.07.2025 15 hod UTC

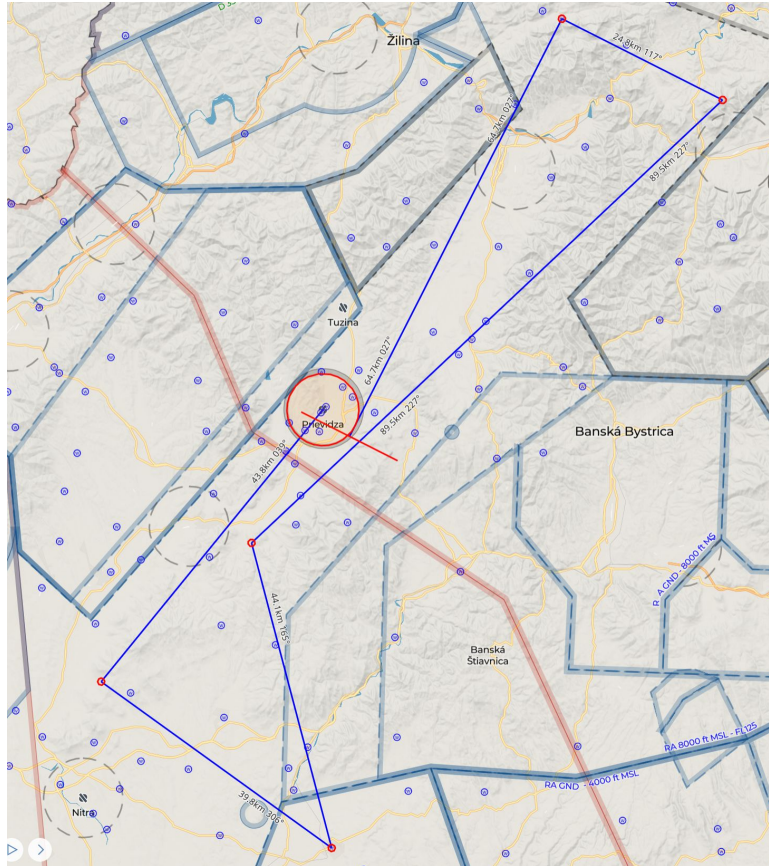


# Meteogram PRIEVIDZA na pondeli 14.07.2025



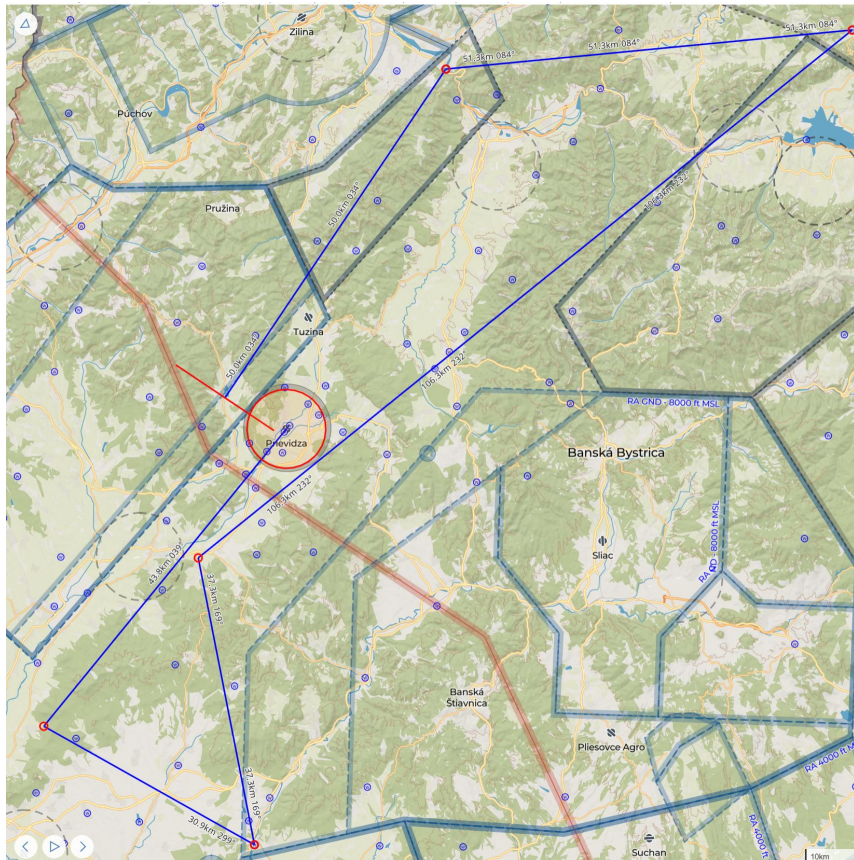


# TASK FOR CLUB CLASS



**Racing task**  
**Total:**  
**306.69 km**

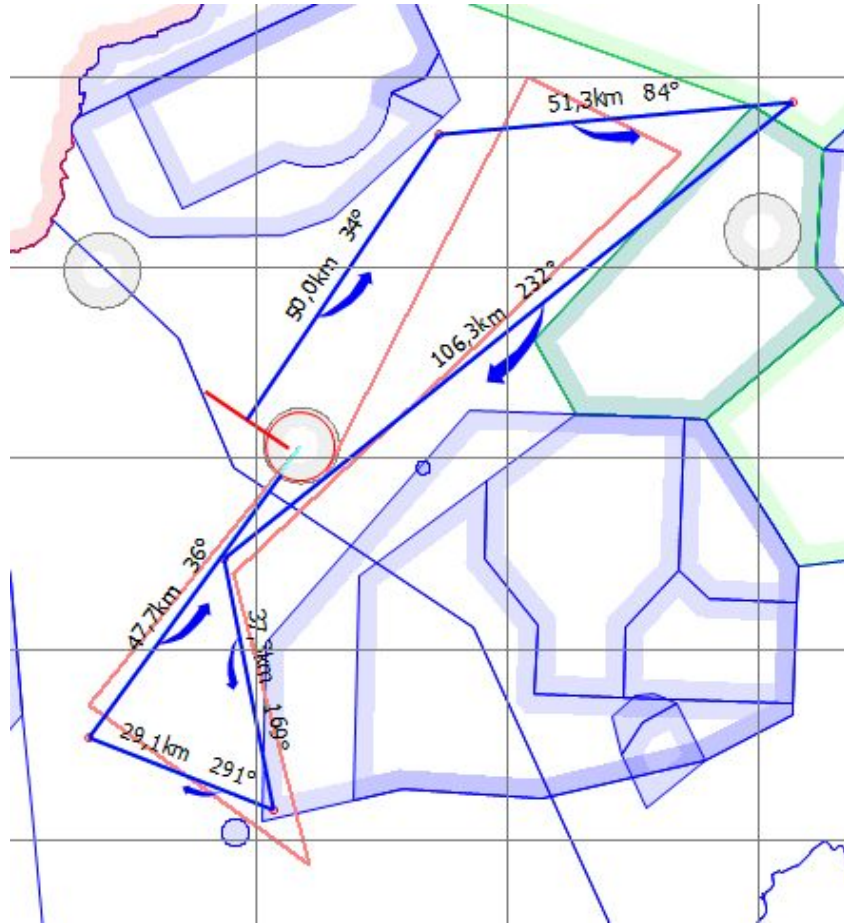
# TASK FOR STANDARD CLASS



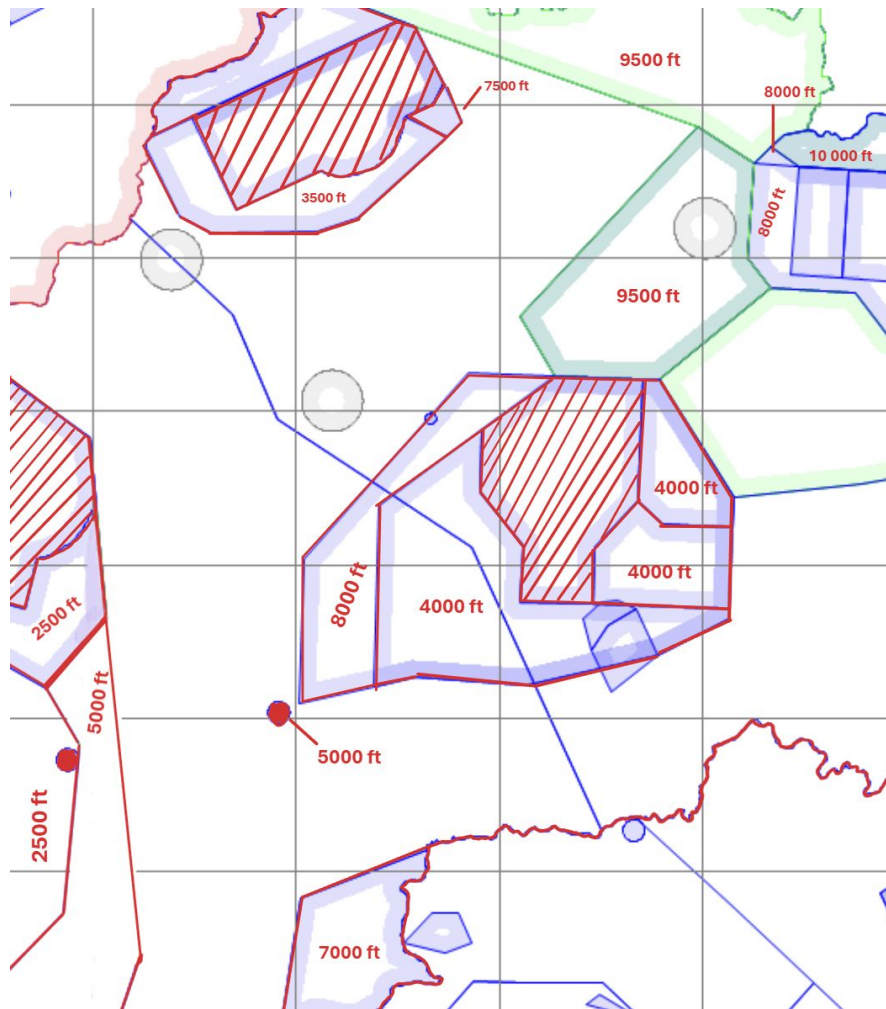
**Racing task**  
**Total:**  
**319.73 km**



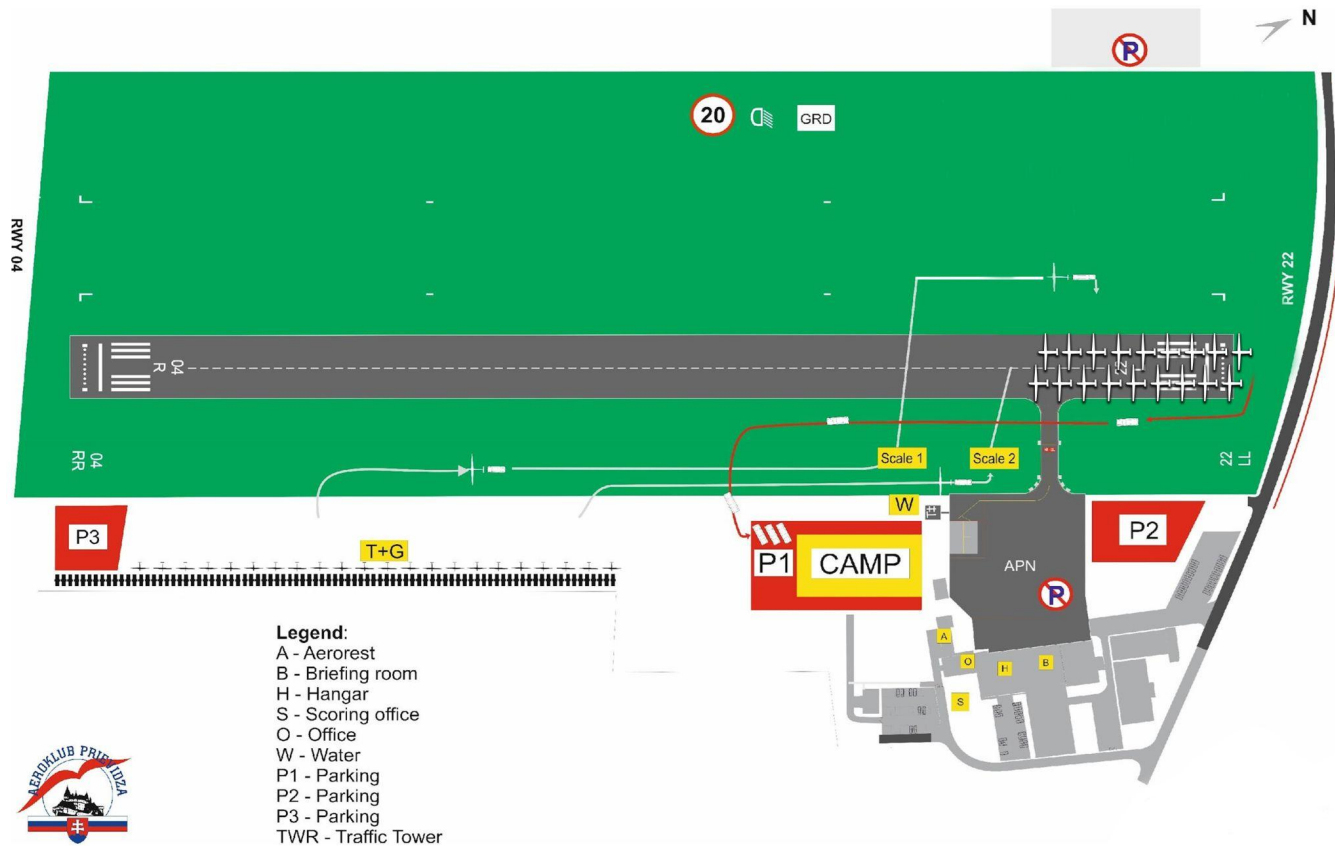
# TASK OVERLAY



# AIRSPACE



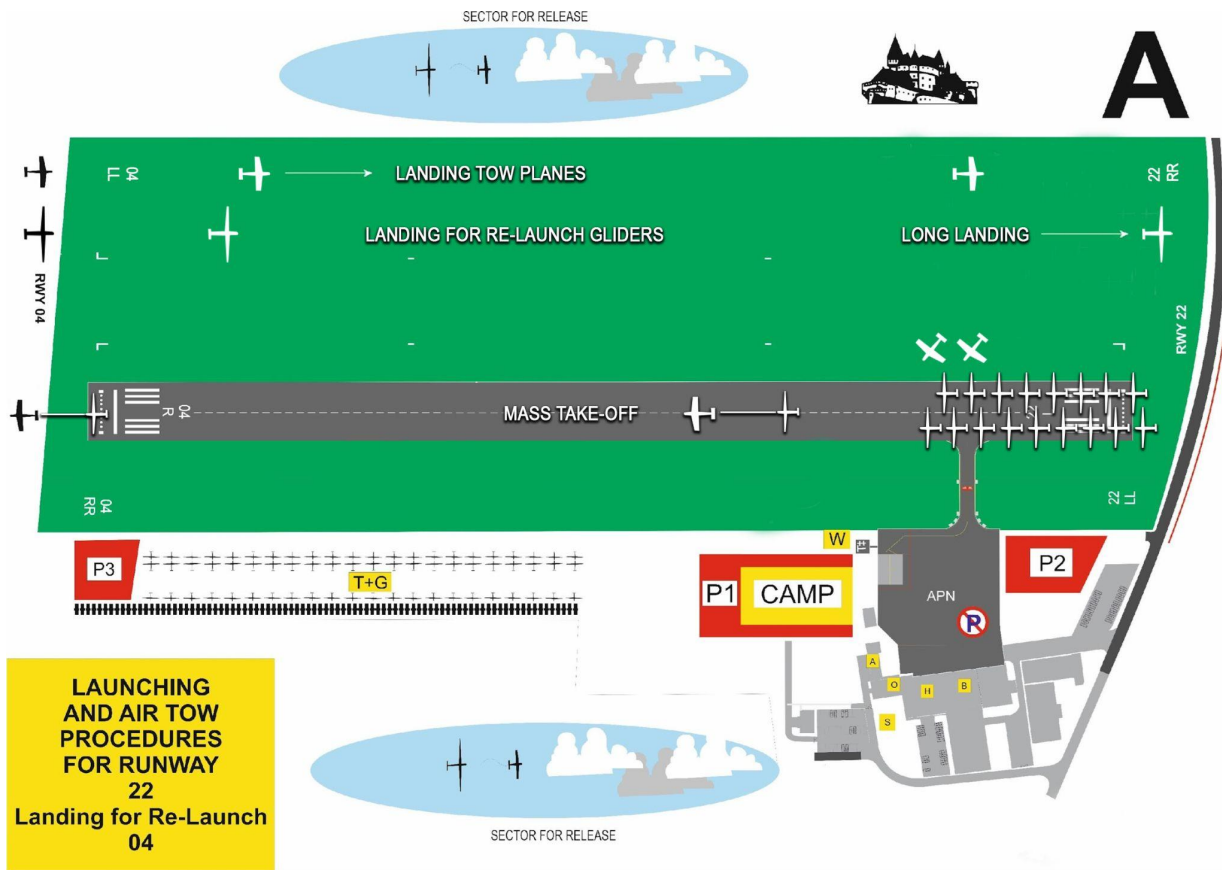
# GRID ORDER RWY 22



# FREQUENCIES

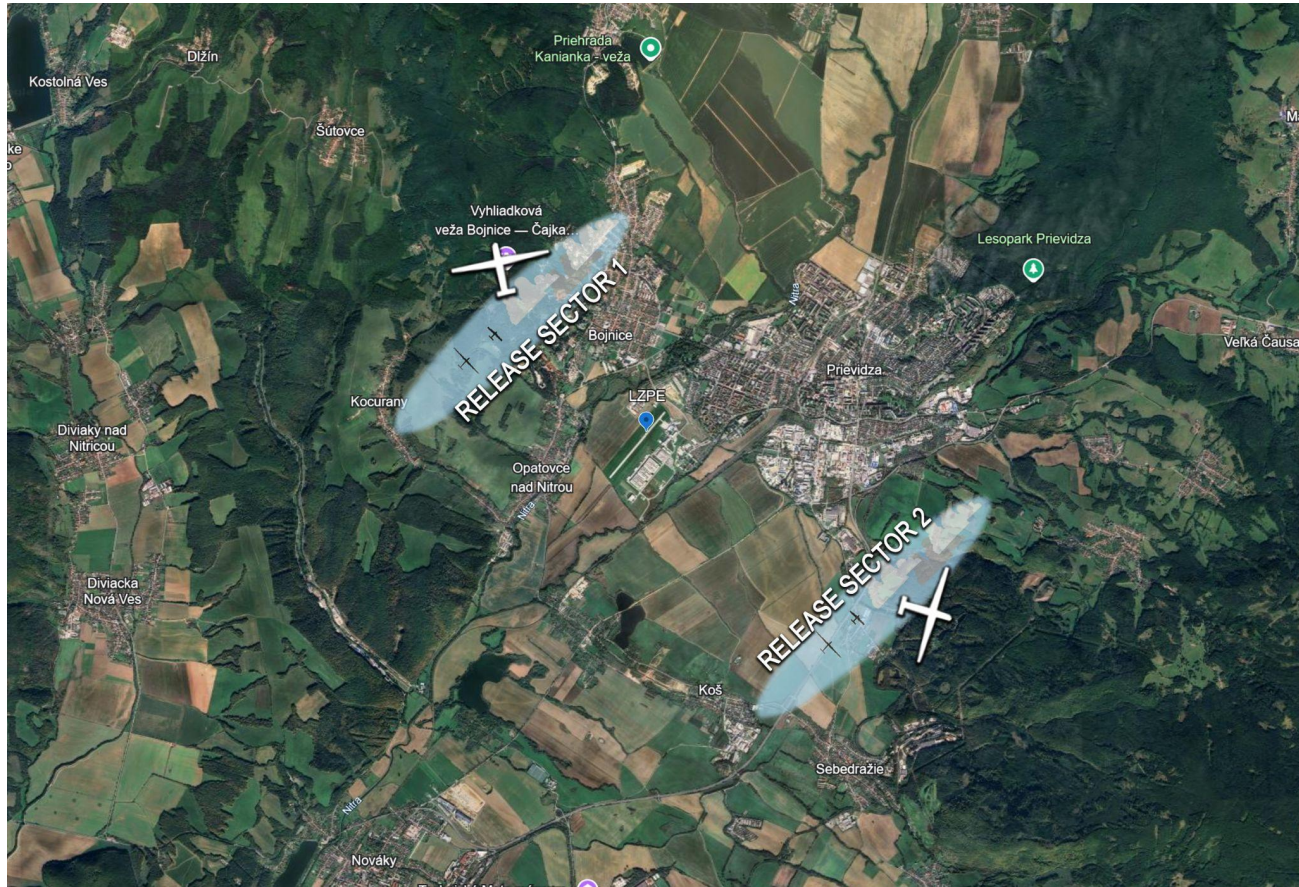
- ★ TAKE OFF FREQUENCY: **122,605**
- ★ **30** MINUTES AFTER START LINE OPENING &  
FOR FINISHES: **123,055**

# TAKE-OFF RWY 22

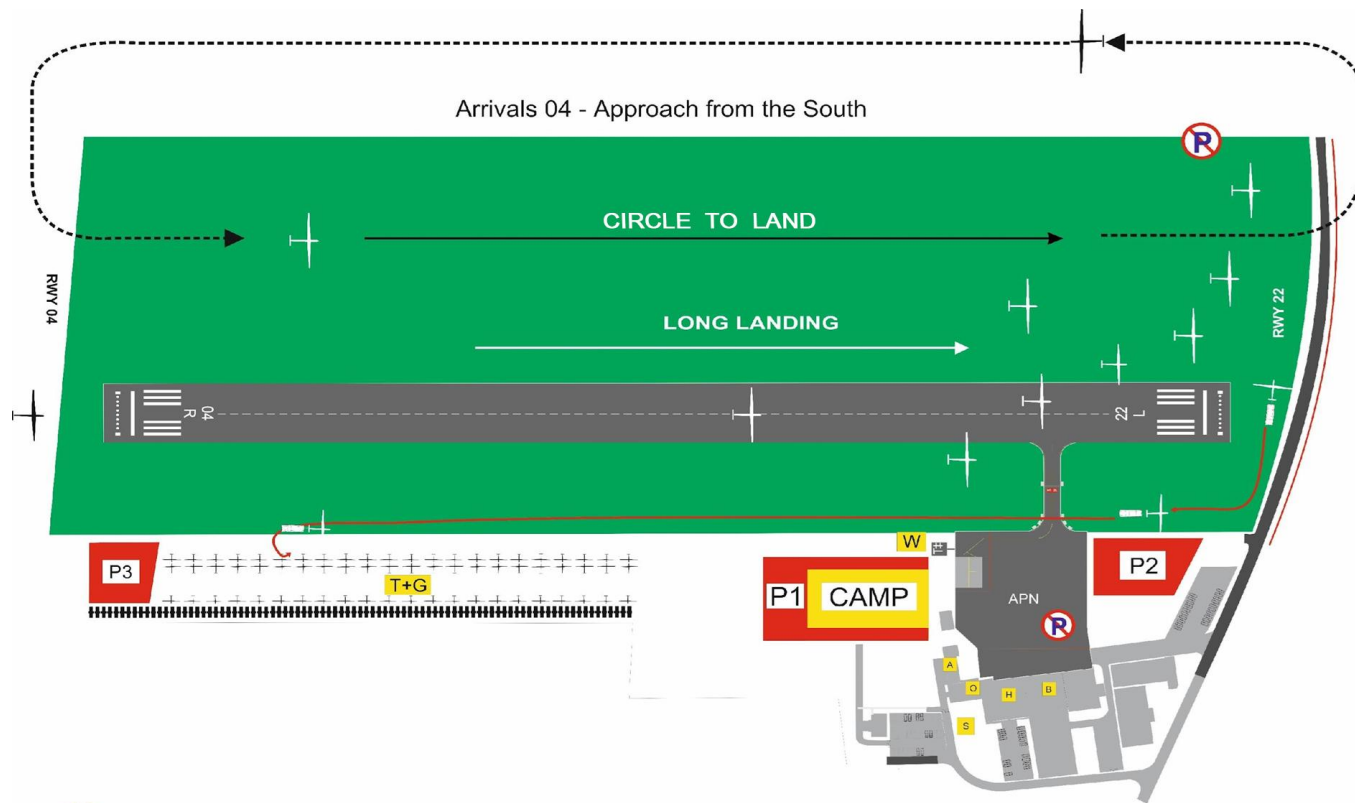




# RELEASE SECTORS



# LANDING RWY 04



# START PROCEDURE

- ★ PEV WAIT TIME - **10 MINUTES**
  - ★ PEV START WINDOW - **5 MINUTES**
  - ★ MAXIMUM NUMBER OF STARTS - **THREE (3)**
- 
- ★ PRE-START ALTITUDE LIMIT  
**1800 m AMSL**



# START LINE OPENING

START LINE WILL OPEN

**30 MINUTES**

AFTER LAST LAUNCH IN CLASS



# FINISH RING

- ★ FINISH RING: 5 km
- ★ HEIGHT ON RING: 460 m AMSL

# IGC FILE DELIVERY

★ SEND ALL FILES TO

**igcprievidza@gmail.com**

★ FILE DELIVERY TIME **45 MIN** AFTER LANDING

★ INCLUDE **CN** IN EMAIL SUBJECT

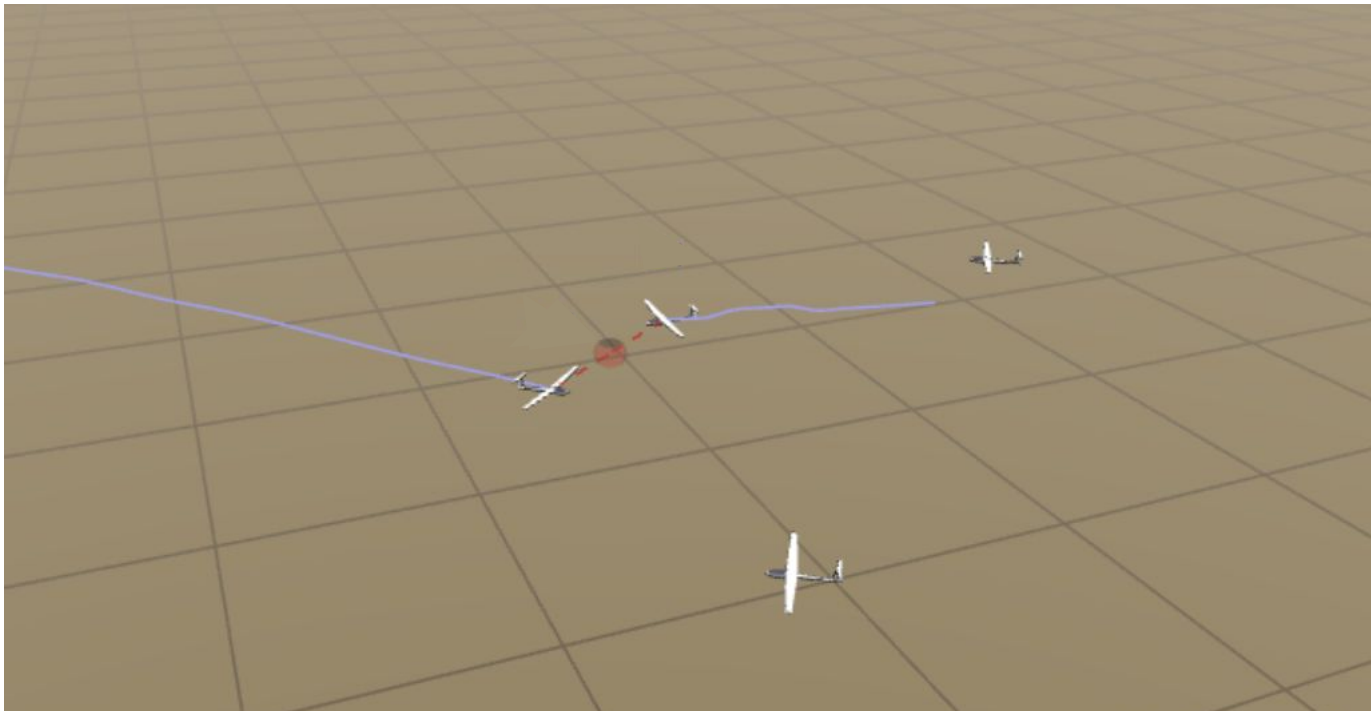


# YESTERDAY WRAP-UP

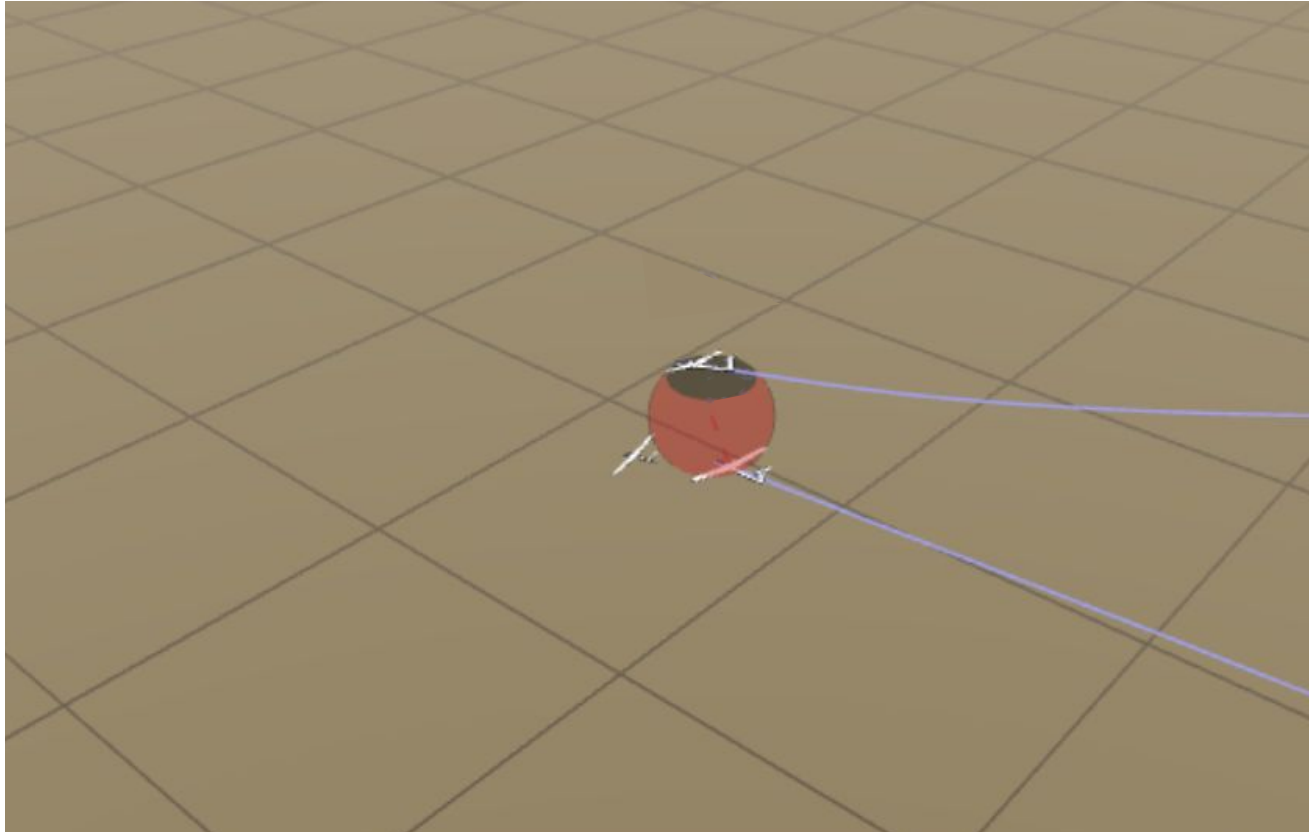
- ★ THANK YOU FOR LONG AND SAFE LANDINGS
- ★ TOWING PILOTS ARE READY FOR TOW  
RETRIEVES
- ★ REPORT OUTLANDINGS



# SAFETY



# SAFETY





# BE MINDFUL

★ DO YOU THINK AGGRESSIVE JOINING TO  
THERMALS WIN THE DAY?

★ SPEAK WITH SAFETY PILOTS

- S4 - Lars van Breemen CLUB CLASS
- W8 - Michaela Rendlová STANDARD CLASS

# BE MINDFUL

- ★ IN CASE OF SERIOUS ISSUES, PLEASE  
REPORT IT OFFICIALLY IN THE COMPETITION  
OFFICE

# KIND REMINDER

- ★ LOOK OUT, LOOK OUT, LOOK OUT
- ★ FOLLOW LANDING PROCEDURES
- ★ LEAVE THE RWY ASAP AFTER LANDING



# JET ARRIVAL TOMORROW

★ DO NOT DRIVE CLOSE TO RUNWAY  
BETWEEN 8:00-8:15 !!!

★ TMW GRID WILL BE OPENED AT 8:30



# PHOTOS OF THE DAY



credit to: **Clement de Péchy**

# SLOVAK EVENING PARTY







I *need  
miss  
want  
love* Gliding

Have a nice flight! 

